



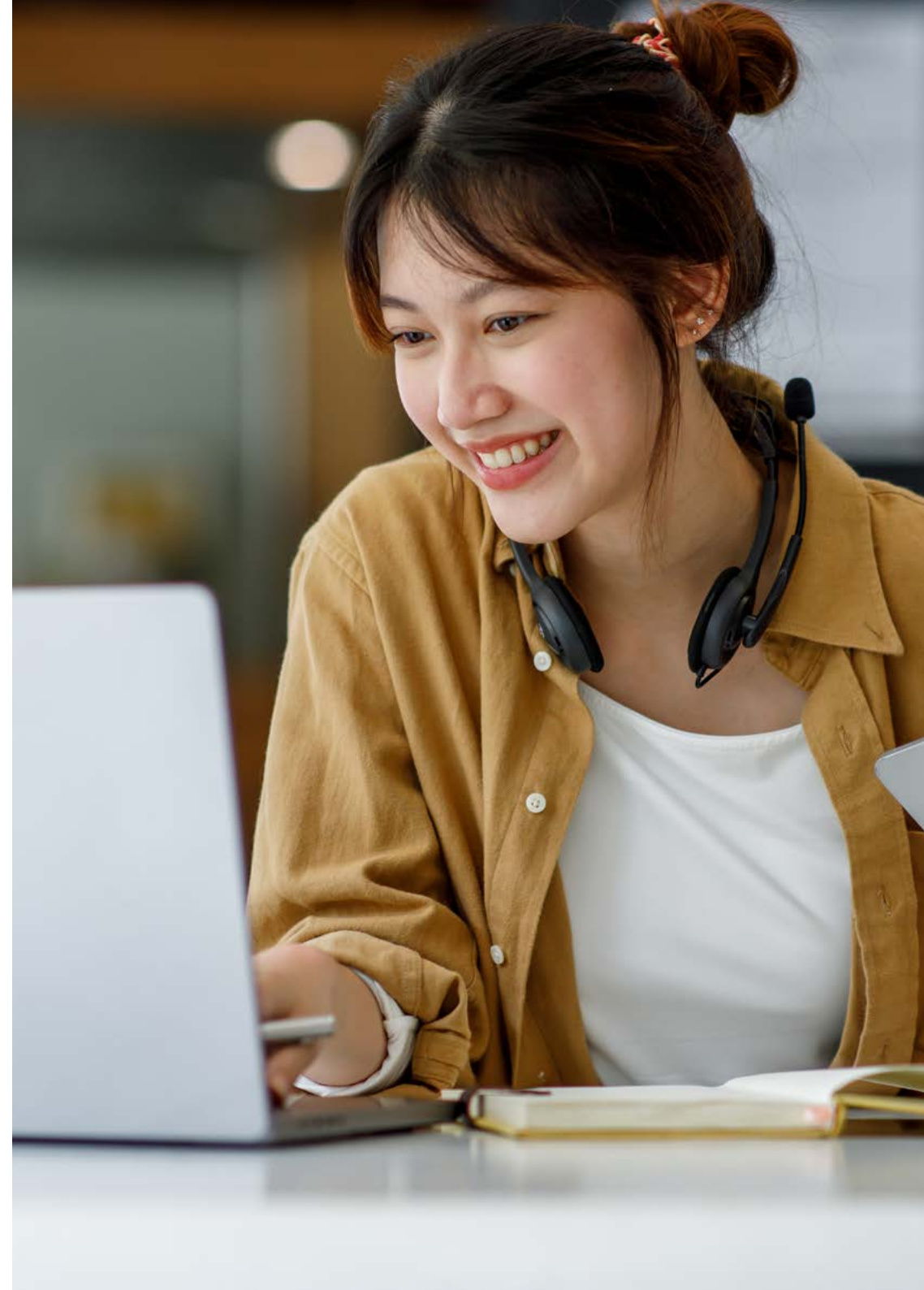
CFAB / ACA (ICAEW)

International Live Online
Timetable and Overview
Planner 2025



Version 6.0 Information last updated 22nd January 2025

Please note: Information and dates in this timetable are subject to change.



ACA Course Information (Current ACA Syllabus)

This timetable details the courses that our centre is offering for the ACA exams.

Certificate Level	
AC	Accounting
AS	Assurance
BTF	Business Technology & Finance
PTX	Principles of Taxation
MI	Management Information
LAW	Law

Learners starting ACA Certificate from September 2024 will study the new ACA syllabus. Please refer to the 'Next Generation ACA Certificate Level Timetable' for more details.

Professional & Advanced Level courses on current syllabus will continue to run throughout 2025.

Professional Level	
FAR	Financial Accounting and Reporting IFRS (2)
AA	Audit & Assurance
TC	Tax Compliance
FM	Financial Management
BST	Business Strategy & Technology
BPT	Business Planning: Taxation (3)
BPB	Business Planning: Banking (3)
BPI	Business Planning: Insurance (3)

Advanced Level	
CR	Corporate Reporting
SBM	Strategic Business Management
ACS	Advanced Case Study (4)

- (1) FAR can only be taken under IFRS. All Kaplan FAR learners will receive complimentary access to our UK GAAP conversion course. _____
- (2) Business Planning can be sat under either the Taxation, Banking or Insurance variant. Only a learner with a workplace specialisation of Banking or Insurance should undertake the BPB or BPI exams - more details on this can be found [here](#). (4) A learner may not attempt the Case Study until they have attempted all other exams. A learner can sit all three Advanced Level assessments at the [same](#) session and still comply with this rule. A learner may not attempt the Case Study until they have completed all but their last year of approved training by the end of the month in which the assessment is held.



Please contact us using the details below to make a course booking on the timetable dates
0161 259 7400 studentservices@kaplan.co.uk www.kaplan.co.uk/courses/aca-icaew

Kaplan Pathway Options (Current ACA Syllabus)

Pathway	Certificate Level	Professional Sitting 1	Professional Sitting 2	Professional Sitting 3	Advanced Sitting 1	Advanced Sitting 2
3:3 Professional & Intense Advanced	First 4–6 months of study	FAR/AA/TC	FM/BST/BP	–	CR/SBM/ACS	–
3:3 Professional & Decoupled Advanced	First 4–6 months of study	FAR/AA/TC	FM/BST/BP	–	CR/SBM	ACS
2:2:2 Professional & Intense Advanced	First 4–6 months of study	FAR/AA	TC/FM	BST/BP	CR/SBM/ACS	–
2:2:2 Professional & Decoupled Advanced	First 4–6 months of study	FAR/AA	TC/FM	BST/BP	CR/SBM	ACS

If your preferred pathway is not available at your chosen Kaplan training location we will be able to provide your preferred pathway via our [Live Online ACA course offering](#).

Our Advanced Case Study Resit Courses are designed to allow learners to understand where their exam technique went wrong and show them how to improve it. To find out more about our Advanced Case Study Resit Courses please click [here](#).

Learners studying Certificate Level must sit their exam in the same calendar year as their course of study. If the exam is sat in a different calendar year, updated study materials will be required.

Please ensure you study BPT **at the same time or after** TC as there is assumed knowledge from TC included within the BPT syllabus.



Please contact us using the details below to make a course booking on the timetable dates
 0161 259 7400 studentservices@kaplan.co.uk www.kaplan.co.uk/courses/aca-icaew

Kaplan's ACA Course Durations 2025 (Current ACA Syllabus)

Certificate Days			
Subject	Tutor-Led	OnDemand	Total
AC	7		7
AS	3		3
LAW		3	3
BTF		3	3
PTX	4		4
MI	4		4

Learners starting ACA Certificate from September 2024 will study the new ACA syllabus. Please refer to the 'Next Generation ACA Certificate Level Timetable' for more details.

Live Online Course Times	
Daytime	09.00 – 16.30 (UK Time)

First time learners must study and attend the Tuition and Exam Preparation phases of the course. Individual phases of the course cannot be booked in isolation.

Professional Days				
Subject	Tuition		Exam Prep	Total
	Tutor-Led	Personalised	Tutor-Led	
FAR	6	2	4	12
AA	3	1	3	7
TC	6	2	3	11
FM	5	1	3	9
BST	3	1	3	7
BPT	5	3	4	12
BPB	5	3	4	12
BPI	5	3	4	12

Advanced Days				
Subject	Tuition		Exam Prep	Total
	Tutor-Led	Personalised	Tutor-Led	
CR	5	2	4	11
SBM	3	1	3	7
ACS	5	0	5	10

Please note that for evening and Live Online courses, one session equates to half a day.



Please contact us using the details below to make a course booking on the timetable dates
0161 259 7400 studentservices@kaplan.co.uk www.kaplan.co.uk/courses/aca-icaew

Kaplan's ACA Next Generation Certificate Course Durations 2025

Subject	Tutor-Led	Focus Day**	OnDemand	Total
Accounting Fundamentals (AF)	7	1		8
Assurance and Risk Fundamentals (ARF)	3	1		4
Tax Fundamentals (TF)*	5	1		6
Business Law (BL)***			4	4
Business Insight and Performance (BIP)	5	1		6
Sustainability and Ethics (SE)***			4	4

* Please note: The Tax Fundamentals (TF) exam will not be available until 1st December 2025. Learners who wish to study Tax Fundamentals between September and December 2025 should instead complete the Principles of Tax (PTX) exam. PTX follows the current syllabus and can be taken as an alternative to TF.

** A Focus Day is a scheduled day within the course for consolidating knowledge and reinforcing learning, with content and pace tailored to individual learners.

*** It is recommended to study the four tutor-led Certificate papers from September to December. The remaining two papers, Business Law (BL) and Sustainability and Ethics (SE), should be studied OnDemand during January and February. Learners who prefer a more intensive study schedule may choose to study one or both of Business Law and Sustainability and Ethics alongside Taxation Fundamentals (TF) and Business Insight and Performance (BIP).

Live Online Course Times	
Daytime	09.00–16.30 (UK Time)



Please contact us using the details below to make a course booking on the timetable dates
 0161 259 7400 studentservices@kaplan.co.uk www.kaplan.co.uk/courses/aca-icaew

Live Online Certificate Level Current Syllabus 2025

Week commencing:	January							February							March							April					May																																
	6th			13th				3rd			10th				24th				10th			24th				7th					19th																												
	6	7	8	9	10	13	14	15	16	17	3	4	5	6	7	10	11	12	13	14	24	25	26	27	28	10	11	12	13	14	24	25	26	27	28	7	8	9	10	11	19	20	21	22	23														
M	T	W	T	F	M	T	W	T	F	M	T	W	T	F	M	T	W	T	F	M	T	W	T	F	M	T	W	T	F	M	T	W	T	F	M	T	W	T	F	M	T	W	T	F	M	T	W	T	F										
Accounting (AC) - Option 1	T	T	T	T	T	T	T																																																				
Assurance (AS) - Option 1								T	T	T																																																	
Accounting (AC) - Option 2											T	T	T	T	T	T	T																																										
Assurance (AS) - Option 2																																																											
Principles of Tax (PTX)																																																											
Management Information (MI)																																																											

Live Online Certificate Level Next Generation Syllabus 2025

Week commencing:	September														October										November										December																																		
	1st				8th				15th				22nd				29th			6th				20th			10th				17th				8th				15th																														
	1	2	3	4	5	8	9	10	11	12	15	16	17	18	19	22	23	24	25	26	29	30	1	2	3	6	7	8	9	10	20	21	22	23	24	10	11	12	13	14	17	18	19	20	21	8	9	10	11	12	15	16	17	18	19														
M	T	W	T	F	M	T	W	T	F	M	T	W	T	F	M	T	W	T	F	M	T	W	T	F	M	T	W	T	F	M	T	W	T	F	M	T	W	T	F	M	T	W	T	F	M	T	W	T	F	M	T	W	T	F	M	T	W	T	F	M	T	W	T	F	M	T	W	T	F
Accounting Fundamentals (AF) - Option 1	T	T	T			F	T	T	T	T																																																											
Assurance & Risk Fundamentals (ARF) - Option 1																																																																					
Accounting Fundamentals (AF) - Option 2																																																																					
Assurance & Risk Fundamentals (ARF) - Option 2																																																																					
Accounting Fundamentals (AF) - Option 3																																																																					
Assurance & Risk Fundamentals (ARF) - Option 3																																																																					
Principles of Tax (PTX)																																																																					
Business Insight & Performance (BIP) - Option 1																																																																					
Business Insight & Performance (BIP) - Option 2																																																																					

T Tuition F Focus Day * EP Exam Preparation

* A Focus Day is a scheduled day within the course for consolidating knowledge and reinforcing learning, with content and pace tailored to individual learners. There will not be a live session on these dates. It is essential that you work through the content of the Focus Day before the next classroom course date detailed on the timetable.

Please note: The Tax Fundamentals (TF) exam will not be available until 1st December 2025. Learners who wish to study Tax Fundamentals between September and December 2025 should instead complete the Principles of Tax (PTX) exam. PTX follows the current syllabus and can be taken as an alternative to TF.

The above timetable indicates that learners will attend four Certificate papers from September to December. It is recommended that the remaining two papers, Business Law (BL) and Sustainability and Ethics (SE), be studied OnDemand during January and February. Learners who wish to study more intensively could choose to study one or both of BL and SE alongside Principles of Tax (PTX) and Business Insight and Performance (BIP).

Live Online Professional Level - March 2025

Week commencing:	January														February															
	6th				13th				20th				27th				3rd			10th										
	6	7	8	9	10	13	14	15	16	17	20	21	22	23	24	27	28	29	30	31	3	4	5	6	7	10	11	12	13	14
Available Study Combinations																														
3:3 FAR/AA/TC - Option 1	T	T	T	T	T	T	T	T	T						T	T	T	T	T	T	T	T	T							
3:3 FAR/AA/TC - Option 2	T	T	T	T	T	T	T	T	T						T	T	T	T	T	T	T	T	T							
3:3 BPT/BST/FM - Option 1										T	T	T	T	T	T						T	T	T	T	T	T	T	T	T	
3:3 BPT/BST/FM - Option 2										T	T	T	T	T	T						T	T	T	T	T	T	T	T	T	
2:2:2 FAR/AA - Option 1				T	T	T	T														T	T	T	T	T					
2:2:2 FAR/AA - Option 2				T	T	T	T														T	T	T	T	T					
2:2:2 BPT/BST - Option 1										T	T	T	T								T	T	T	T	T					
2:2:2 BPT/BST - Option 2										T	T	T	T								T	T	T	T	T					
2:2:2 FM/TC - Option 1	T	T													T	T	T	T	T	T							T	T	T	
2:2:2 FM/TC - Option 2	T	T													T	T	T	T	T	T							T	T	T	
For information, please find the classroom and exam dates within the available study combinations of the individual subjects below:																														
Financial Accounting & Reporting (FAR) - Option 1				T																						T	T	T	T	
Audit & Assurance (AA) - Option 1				T	T	T																				T				
Tax Compliance (TC) - Option 1	T	T																			T	T	T	T						
Financial Accounting & Reporting (FAR) - Option 2				T																						T	T	T	T	
Audit & Assurance (AA) - Option 2				T	T	T																				T				
Tax Compliance (TC) - Option 2	T	T																			T	T	T	T						
Business Planning Tax (BPT) - Option 1																														
Business Strategy & Technology (BST) - Option 1																														
Financial Management (FM) - Option 1																														
Business Planning Tax (BPT) - Option 2																														
Business Strategy & Technology (BST) - Option 2																														
Financial Management (FM) - Option 2																														

Week commencing:	February				March										
	24th				3rd			10th							
	24	25	26	27	28	3	4	5	6	7	10	11	12	13	14
Available Study Combinations															
3:3 FAR/AA/TC - Option 1	EP	EP	EP	EP	EP	EP	EP	EP	EP	EP	EP	EP	EP	EP	EP
3:3 FAR/AA/TC - Option 2	EP	EP	EP	EP	EP	EP	EP	EP	EP	EP	EP	EP	EP	EP	EP
3:3 BPT/BST/FM - Option 1	EP	EP	EP	EP	EP	EP	EP	EP	EP	EP	EP	EP	EP	EP	EP
3:3 BPT/BST/FM - Option 2	EP	EP	EP	EP	EP	EP	EP	EP	EP	EP	EP	EP	EP	EP	EP
2:2:2 FAR/AA - Option 1	EP	EP	EP	EP											
2:2:2 FAR/AA - Option 2	EP	EP	EP	EP											
2:2:2 BPT/BST - Option 1			EP	EP	EP	EP	EP	EP	EP	EP	EP	EP	EP	EP	EP
2:2:2 BPT/BST - Option 2			EP	EP	EP	EP	EP	EP	EP	EP	EP	EP	EP	EP	EP
2:2:2 FM/TC - Option 1	EP	EP													
2:2:2 FM/TC - Option 2	EP	EP													
For information, please find the classroom and exam dates within the available study combinations of the individual subjects below:															
Financial Accounting & Reporting (FAR) - Option 1			EP	EP											
Audit & Assurance (AA) - Option 1	EP	EP													
Tax Compliance (TC) - Option 1					EP	EP									
Financial Accounting & Reporting (FAR) - Option 2			EP	EP											
Audit & Assurance (AA) - Option 2	EP	EP													
Tax Compliance (TC) - Option 2					EP	EP									
Business Planning Tax (BPT) - Option 1															
Business Strategy & Technology (BST) - Option 1															
Financial Management (FM) - Option 1	EP	EP													
Business Planning Tax (BPT) - Option 2					EP	EP									
Business Strategy & Technology (BST) - Option 2															
Financial Management (FM) - Option 2	EP	EP													

T	Tuition	EP	Exam Preparation
T	Personalised *	E	Real Exam
T	Live Online/Exam **		

* Personalised days are studied flexibly online and there will not be a live session on these dates. The timetable dates provided for personalised days are indicative only. You ultimately have the flexibility to complete your personalised study in the period between the preceding and next classroom course dates as shown on the timetable.

** This day consists of an online teaching session in the morning, followed by a course exam in the afternoon.

A complimentary Data & IT module available on MyKaplan will enhance your Professional & Advanced Level Studies.

Live Online Professional Level - June 2025

Week commencing:	March							April							May															
	17th	18th	19th	20th	21st	24th	31st	7th	14th	21st	28th	5th	12th	19th	26th	2nd	9th	16th	23rd	30th	6th	13th	20th	27th	3rd	10th	17th	24th	31st	
Available Study Combinations	[Calendar grid showing class availability for various combinations]																													
3:3 FAR/AA/TC - Option 1	[Class availability for FAR/AA/TC - Option 1]																													
3:3 FAR/AA/TC - Option 2	[Class availability for FAR/AA/TC - Option 2]																													
3:3 FAR/AA/TC - Option 3	[Class availability for FAR/AA/TC - Option 3]																													
3:3 BPT/BST/FM - Option 1	[Class availability for BPT/BST/FM - Option 1]																													
3:3 BPT/BST/FM - Option 2	[Class availability for BPT/BST/FM - Option 2]																													
3:3 BPT/BST/FM - Option 3	[Class availability for BPT/BST/FM - Option 3]																													
2:2-2 FAR/AA - Option 1	[Class availability for FAR/AA - Option 1]																													
2:2-2 FAR/AA - Option 2	[Class availability for FAR/AA - Option 2]																													
2:2-2 FAR/AA - Option 3	[Class availability for FAR/AA - Option 3]																													
2:2-2 BPT/BST - Option 1	[Class availability for BPT/BST - Option 1]																													
2:2-2 BPT/BST - Option 2	[Class availability for BPT/BST - Option 2]																													
2:2-2 BPT/BST - Option 3	[Class availability for BPT/BST - Option 3]																													
2:2-2 FM/TC - Option 1	[Class availability for FM/TC - Option 1]																													
2:2-2 FM/TC - Option 2	[Class availability for FM/TC - Option 2]																													
2:2-2 FM/TC - Option 3	[Class availability for FM/TC - Option 3]																													
BPB	[Class availability for BPB]																													
BPI	[Class availability for BPI]																													

For information, please find the classroom and exam dates within the available study combinations of the individual subjects below:

Financial Accounting & Reporting (FAR) - Option 1	[Subject availability grid]																													
Audit & Assurance (AA) - Option 1	[Subject availability grid]																													
Tax Compliance (TC) - Option 1	[Subject availability grid]																													
Financial Accounting & Reporting (FAR) - Option 2	[Subject availability grid]																													
Audit & Assurance (AA) - Option 2	[Subject availability grid]																													
Tax Compliance (TC) - Option 2	[Subject availability grid]																													
Financial Accounting & Reporting (FAR) - Option 3	[Subject availability grid]																													
Audit & Assurance (AA) - Option 3	[Subject availability grid]																													
Tax Compliance (TC) - Option 3	[Subject availability grid]																													
Business Planning Tax (BPT) - Option 1	[Subject availability grid]																													
Business Strategy & Technology (BST) - Option 1	[Subject availability grid]																													
Financial Management (FM) - Option 1	[Subject availability grid]																													
Business Planning Tax (BPT) - Option 2	[Subject availability grid]																													
Business Strategy & Technology (BST) - Option 2	[Subject availability grid]																													
Financial Management (FM) - Option 2	[Subject availability grid]																													
Business Planning Tax (BPT) - Option 3	[Subject availability grid]																													
Business Strategy & Technology (BST) - Option 3	[Subject availability grid]																													
Financial Management (FM) - Option 3	[Subject availability grid]																													
Business Planning Banking (BPB)	[Subject availability grid]																													
Business Planning Insurance (BPI)	[Subject availability grid]																													

Week commencing:	May							June																						
	19th	20th	21st	22nd	26th	27th	28th	29th	30th	1st	2nd	3rd	4th	5th	6th	7th	8th	9th	10th	11th	12th	13th								
Available Study Combinations	[Calendar grid showing class availability for various combinations]																													
3:3 FAR/AA/TC - Option 1	[Class availability for FAR/AA/TC - Option 1]																													
3:3 FAR/AA/TC - Option 2	[Class availability for FAR/AA/TC - Option 2]																													
3:3 FAR/AA/TC - Option 3	[Class availability for FAR/AA/TC - Option 3]																													
3:3 BPT/BST/FM - Option 1	[Class availability for BPT/BST/FM - Option 1]																													
3:3 BPT/BST/FM - Option 2	[Class availability for BPT/BST/FM - Option 2]																													
3:3 BPT/BST/FM - Option 3	[Class availability for BPT/BST/FM - Option 3]																													
2:2-2 FAR/AA - Option 1	[Class availability for FAR/AA - Option 1]																													
2:2-2 FAR/AA - Option 2	[Class availability for FAR/AA - Option 2]																													
2:2-2 FAR/AA - Option 3	[Class availability for FAR/AA - Option 3]																													
2:2-2 BPT/BST - Option 1	[Class availability for BPT/BST - Option 1]																													
2:2-2 BPT/BST - Option 2	[Class availability for BPT/BST - Option 2]																													
2:2-2 BPT/BST - Option 3	[Class availability for BPT/BST - Option 3]																													
2:2-2 FM/TC - Option 1	[Class availability for FM/TC - Option 1]																													
2:2-2 FM/TC - Option 2	[Class availability for FM/TC - Option 2]																													
2:2-2 FM/TC - Option 3	[Class availability for FM/TC - Option 3]																													
BPB	[Class availability for BPB]																													
BPI	[Class availability for BPI]																													

For information, please find the classroom and exam dates within the available study combinations of the individual subjects below:

Financial Accounting & Reporting (FAR) - Option 1	[Subject availability grid]																													
Audit & Assurance (AA) - Option 1	[Subject availability grid]																													
Tax Compliance (TC) - Option 1	[Subject availability grid]																													
Financial Accounting & Reporting (FAR) - Option 2	[Subject availability grid]																													
Audit & Assurance (AA) - Option 2	[Subject availability grid]																													
Tax Compliance (TC) - Option 2	[Subject availability grid]																													
Financial Accounting & Reporting (FAR) - Option 3	[Subject availability grid]																													
Audit & Assurance (AA) - Option 3	[Subject availability grid]																													
Tax Compliance (TC) - Option 3	[Subject availability grid]																													
Business Planning Tax (BPT) - Option 1	[Subject availability grid]																													
Business Strategy & Technology (BST) - Option 1	[Subject availability grid]																													
Financial Management (FM) - Option 1	[Subject availability grid]																													
Business Planning Tax (BPT) - Option 2	[Subject availability grid]																													
Business Strategy & Technology (BST) - Option 2	[Subject availability grid]																													
Financial Management (FM) - Option 2	[Subject availability grid]																													
Business Planning Tax (BPT) - Option 3	[Subject availability grid]																													
Business Strategy & Technology (BST) - Option 3	[Subject availability grid]																													
Financial Management (FM) - Option 3	[Subject availability grid]																													
Business Planning Banking (BPB)	[Subject availability grid]																													
Business Planning Insurance (BPI)	[Subject availability grid]																													

T Tuition
T Personalised *
T Live Online/Exam **

EP Exam Preparation
E Real Exam

* Personalised days are studied flexibly online and there will not be a live session on these dates. The timetable dates provided for personalised days are indicative only. You ultimately have the flexibility to complete your personalised study in the period between the preceding and next classroom course dates as shown on the timetable.

** This day consists of an online teaching session in the morning, followed by a course exam in the afternoon.

A complimentary Data & IT module available on MyKaplan will enhance your Professional & Advanced Level Studies.

Live Online Professional Level - September 2025

Week commencing:	June														July														Aug						
	16th							23th							30th							21st							28th						
	16	17	18	19	20	23	24	25	26	27	30	1	2	3	4	21	22	23	24	25	28	29	30	31	1										
Available Study Combinations	M	T	W	T	F	M	T	W	T	F	M	T	W	T	F	M	T	W	T	F	M	T	W	T	F										
3:3 FAR/AA/TC - Option 1	T	T	T	T	T	T	T	T	T						T	T	T	T	T	T	T	T	T	T	T										
3:3 FAR/AA/TC - Option 2	T	T	T	T	T	T	T	T	T						T	T	T	T	T	T	T	T	T	T	T										
3:3 BPT/BST/FM - Option 1					T	T	T	T	T	T	T									T	T	T	T	T	T										
3:3 BPT/BST/FM - Option 1					T	T	T	T	T	T	T									T	T	T	T	T	T										
2:2:2 FAR/AA - Option 1	T	T	T	T					T	T										T	T	T	T	T	T										
2:2:2 FAR/AA - Option 1	T	T	T	T					T	T										T	T	T	T	T	T										
2:2:2 BPT/BST - Option 1					T	T	T	T												T	T	T	T	T	T										
2:2:2 BPT/BST - Option 2					T	T	T	T												T	T	T	T	T	T										
2:2:2 FM/TC - Option 1					T	T	T	T												T	T	T	T	T	T										
2:2:2 FM/TC - Option 2					T	T	T	T												T	T	T	T	T	T										

For information, please find the classroom and exam dates within the available study combinations of the individual subjects below:

Financial Accounting & Reporting (FAR) - Option 1										T	T													T	T	T	T	
Audit & Assurance (AA) - Option 1	T	T	T																		T							
Tax Compliance (TC) - Option 1					T	T	T	T													T	T	T	T				
Financial Accounting & Reporting (FAR) - Option 2										T	T													T	T	T	T	
Audit & Assurance (AA) - Option 2	T	T	T																									
Tax Compliance (TC) - Option 2					T	T	T	T													T	T	T	T				
Business Planning Tax (BPT) - Option 1					T	T	T														T	T						
Business Strategy & Technology (BST) - Option 1					T	T															T	T						
Financial Management (FM) - Option 1										T	T															T	T	T
Business Planning Tax (BPT) - Option 2										T	T										T	T						
Business Strategy & Technology (BST) - Option 2					T	T																						
Financial Management (FM) - Option 2										T	T															T	T	T

Week commencing:	August					September																					
	25th					1st				8th			12														
	25	26	27	28	29	1	2	3	4	5	8	9	10	11	12												
Available Study Combinations	M	T	W	T	F	M	T	W	T	F	M	T	W	T	F												
3:3 FAR/AA/TC - Option 1	EP	EP	EP	EP	EP	EP	EP	EP	EP	EP	EP	EP	EP	EP	E	E	E										
3:3 FAR/AA/TC - Option 2	EP	EP	EP	EP	EP	EP	EP	EP	EP	EP	EP	EP	EP	EP	E	E	E										
3:3 BPT/BST/FM - Option 1	EP	EP	EP	EP	EP	EP	EP	EP	EP	EP	EP	EP	EP	EP	E	E	E										
3:3 BPT/BST/FM - Option 1	EP	EP	EP	EP	EP	EP	EP	EP	EP	EP	EP	EP	EP	EP	E	E	E										
2:2:2 FAR/AA - Option 1	EP	EP			EP	EP	EP	EP	EP	EP	EP	EP	EP	EP	E												
2:2:2 FAR/AA - Option 1	EP	EP			EP	EP	EP	EP	EP	EP	EP	EP	EP	EP	E												
2:2:2 BPT/BST - Option 1		EP	EP	EP		EP	EP	EP	EP	EP	EP	EP	EP	EP	E	E											
2:2:2 BPT/BST - Option 2		EP	EP	EP		EP	EP	EP	EP	EP	EP	EP	EP	EP	E	E											
2:2:2 FM/TC - Option 1		EP	EP	EP		EP	EP	EP	EP	EP	EP	EP	EP	EP	E	E											
2:2:2 FM/TC - Option 2		EP	EP	EP		EP	EP	EP	EP	EP	EP	EP	EP	EP	E	E											

For information, please find the classroom and exam dates within the available study combinations of the individual subjects below:

Financial Accounting & Reporting (FAR) - Option 1	EP	EP				EP	EP	EP	EP	EP	EP	EP	EP	EP	E												
Audit & Assurance (AA) - Option 1						EP	EP	EP	EP	EP	EP	EP	EP	EP	E												
Tax Compliance (TC) - Option 1						EP	EP	EP	EP	EP	EP	EP	EP	EP	E												
Financial Accounting & Reporting (FAR) - Option 2	EP	EP				EP	EP	EP	EP	EP	EP	EP	EP	EP	E												
Audit & Assurance (AA) - Option 2						EP	EP	EP	EP	EP	EP	EP	EP	EP	E												
Tax Compliance (TC) - Option 2						EP	EP	EP	EP	EP	EP	EP	EP	EP	E												
Business Planning Tax (BPT) - Option 1						EP	EP	EP	EP	EP	EP	EP	EP	EP	E												
Business Strategy & Technology (BST) - Option 1						EP	EP	EP	EP	EP	EP	EP	EP	EP	E												
Financial Management (FM) - Option 1						EP	EP	EP	EP	EP	EP	EP	EP	EP	E												
Business Planning Tax (BPT) - Option 2						EP	EP	EP	EP	EP	EP	EP	EP	EP	E												
Business Strategy & Technology (BST) - Option 2						EP	EP	EP	EP	EP	EP	EP	EP	EP	E												
Financial Management (FM) - Option 2						EP	EP	EP	EP	EP	EP	EP	EP	EP	E												

T Tuition
T T - Personalised *
L Live Online/Exam **
EP Exam Preparation
E Real Exam

* Personalised days are studied flexibly online and there will not be a live session on these dates. The timetable dates provided for personalised days are indicative only. You ultimately have the flexibility to complete your personalised study in the period between the preceding and next classroom course dates as shown on the timetable.

** This day consists of an online teaching session in the morning, followed by a course exam in the afternoon.

A complimentary Data & IT module available on MyKaplan will enhance your Professional & Advanced Level Studies.

Live Online Advanced Level - July 2025

Week commencing:	March							April							May																					
	24th			31st				7th			21st				28th			12th				19th														
	24	25	26	27	28	31	1	2	3	4	7	8	9	10	11	21	22	23	24	25	28	29	30	1	2	12	13	14	15	16	19	20	21	22	23	
Available Study Combinations	M	T	W	T	F	M	T	W	T	F	M	T	W	T	F	M	T	W	T	F	M	T	W	T	F	M	T	W	T	F	M	T	W	T	F	
CR/SBM/ACS - Option 1			T	T	T	T	T	T	T	T											T	T	T	T	T	T										
CR/SBM/ACS - Option 2			T	T	T	T	T	T	T	T											T	T	T	T	T	T										
CR/SBM/ACS - Option 3						T	T	T	T	T																	T	T	T	T	T	T	T	T	T	
CR/SBM/ACS - Option 4						T	T	T	T	T																	T	T	T	T	T	T	T	T	T	
CR/SBM - Option 1						T	T	T	T	T											T	T	T	T	T											
CR/SBM - Option 2						T	T	T	T	T											T	T	T	T	T											
CR/SBM - Option 3						T	T	T	T	T																		T	T	T	T	T	T	T	T	T
CR/SBM - Option 4						T	T	T	T	T																		T	T	T	T	T	T	T	T	T
CR/SBM - Option 5						T	T	T	T	T																		T	T	T	T	T	T	T	T	T
ACS - Option 1			T	T	T																															
ACS - Option 2			T	T	T																															
ACS - Option 3						T	T	T																												
ACS - Option 4						T	T	T																												

For information, please find the classroom and exam dates within the available study combinations of the individual subjects below:

Corporate Reporting (CR) - Option 1						T	T			T	T																										
Strategic Business Management (SBM) - Option 1										T																											
Advanced Case Study (ACS) - Option 1						T	T	T																													
Corporate Reporting (CR) - Option 2						T	T			T	T																										
Strategic Business Management (SBM) - Option 2										T																											
Advanced Case Study (ACS) - Option 2						T	T	T																													
Corporate Reporting (CR) - Option 3										T	T																										
Strategic Business Management (SBM) - Option 3										T																											
Advanced Case Study (ACS) - Option 3						T	T	T																													
Corporate Reporting (CR) - Option 4										T	T																										
Strategic Business Management (SBM) - Option 4										T	T																										
Advanced Case Study (ACS) - Option 4						T	T	T																													
Corporate Reporting (CR) - Option 5						T	T	T																													
Strategic Business Management (SBM) - Option 5										T																											

Week commencing:	Jun							July												
	30th			7th				14th			21st									
	30	1	2	3	4	7	8	9	10	11	14	15	16	17	18	21	22	23	24	25
Available Study Combinations	M	T	W	T	F	M	T	W	T	F	M	T	W	T	F	M	T	W	T	F
CR/SBM/ACS - Option 1						EP	EP	EP	EP	EP	EP	EP	EP	EP	EP	EP	EP	EP	EP	EP
CR/SBM/ACS - Option 2						EP	EP	EP	EP	EP	EP	EP	EP	EP	EP	EP	EP	EP	EP	EP
CR/SBM/ACS - Option 3						EP	EP	EP	EP	EP	EP	EP	EP	EP	EP	EP	EP	EP	EP	EP
CR/SBM/ACS - Option 4						EP	EP	EP	EP	EP	EP	EP	EP	EP	EP	EP	EP	EP	EP	EP
CR/SBM - Option 1						EP	EP			EP	EP	EP	EP	EP	EP					EP
CR/SBM - Option 2						EP	EP			EP	EP	EP	EP	EP	EP					EP
CR/SBM - Option 3						EP	EP			EP	EP	EP	EP	EP	EP					EP
CR/SBM - Option 4						EP	EP			EP	EP	EP	EP	EP	EP					EP
CR/SBM - Option 5						EP	EP			EP	EP	EP	EP	EP	EP					EP
ACS - Option 1																EP	EP	EP	EP	EP
ACS - Option 2																EP	EP	EP	EP	EP
ACS - Option 3																EP	EP	EP	EP	EP
ACS - Option 4						EP	EP									EP	EP	EP	EP	EP

T Tuition
T Personalised *
T Live Online/Exam **
EP Exam Preparation
E Real Exam

* Personalised days are studied flexibly online and there will not be a live session on these dates. The timetable dates provided for personalised days are indicative only. You ultimately have the flexibility to complete your personalised study in the period between the preceding and next classroom course dates as shown on the timetable.

** This day consists of an online teaching session in the morning, followed by a course exam in the afternoon.

A complimentary Data & IT module available on MyKaplan will enhance your Professional & Advanced Level Studies.

Live Online Advanced Level - November 2025

Week commencing:	August												September												October																			
	11th				18th				25th				1st				8th				15th				22nd				29th															
	11	12	13	14	15	18	19	20	21	22	25	26	27	28	29	1	2	3	4	5	8	9	10	11	12	15	16	17	18	19	22	23	24	25	26	29	30	1	2	3				
		M	T	W	T	F	M	T	W	T	F	M	T	W	T	F	M	T	W	T	F	M	T	W	T	F	M	T	W	T	F	M	T	W	T	F	M	T	W	T	F			
Available Study Combinations																																												
CR/SBM/ACS - Option 1					T T T				T T T																																			
CR/SBM/ACS - Option 2					T T T				T T T																																			
CR/SBM/ACS - Option 3									T T T T T				T																															
CR/SBM - Option 1					T T T				T T T																																			
CR/SBM - Option 2					T T T				T T T																																			
CR/SBM - Option 3					T T T				T T T				T																															
ACS - Option 1																																	T T											
ACS - Option 2																																					T T							
ACS - Option 3																																									T T			
ACS - Option 4																																									T T			

For information, please find the classroom and exam dates within the available study combinations of the individual subjects below:

Corporate Reporting (CR) - Option 1					T T T				T T T																												T T T T																			
Strategic Business Management (SBM) - Option 1					T				T																																T T															
Advanced Case Study (ACS) - Option 1																																													T T											
Corporate Reporting (CR) - Option 2					T T T				T T T																																				T T T											
Strategic Business Management (SBM) - Option 2					T				T																																				T T T											
Advanced Case Study (ACS) - Option 2																																																	T T							
Corporate Reporting (CR) - Option 3									T T T				T T T																																				T T							
Strategic Business Management (SBM) - Option 3									T				T																																				T T							
Advanced Case Study (ACS) - Option 3																																																					T T			
Advanced Case Study (ACS) - Option 4																																																					T T			

Week commencing:	October												November									
	13th				20th				27th				3rd									
	13	14	15	16	17	20	21	22	23	24	27	28	29	30	31	3	4	5	6	7		
		M	T	W	T	F	M	T	W	T	F	M	T	W	T	F	M	T	W	T	F	
Available Study Combinations																						
CR/SBM/ACS - Option 1			EP EP		EP EP		EP EP		EP EP		EP EP		EP EP		EP EP		EP EP		EP EP		EP EP	
CR/SBM/ACS - Option 2			EP EP		EP EP		EP EP		EP EP		EP EP		EP EP		EP EP		EP EP		EP EP		EP EP	
CR/SBM/ACS - Option 3			EP EP		EP EP		EP EP		EP EP		EP EP		EP EP		EP EP		EP EP		EP EP		EP EP	
CR/SBM - Option 1					EP EP		EP EP						EP EP		EP EP		EP EP		EP EP		EP EP	
CR/SBM - Option 2					EP EP		EP EP						EP EP		EP EP		EP EP		EP EP		EP EP	
CR/SBM - Option 3			EP EP		EP EP		EP EP		EP EP						EP EP		EP EP		EP EP		EP EP	
ACS - Option 1			EP EP						EP EP		EP EP								EP EP		EP EP	
ACS - Option 2			EP EP						EP EP		EP EP								EP EP		EP EP	
ACS - Option 3							EP EP						EP EP		EP EP		EP EP		EP EP		EP EP	
ACS - Option 4					EP EP								EP EP		EP EP		EP EP		EP EP		EP EP	

For information, please find the classroom and exam dates within the available study combinations of the individual subjects below:

Corporate Reporting (CR) - Option 1					EP EP						EP EP		EP EP		EP EP		EP EP		EP EP		EP EP	
Strategic Business Management (SBM) - Option 1					EP EP						EP EP		EP EP		EP EP		EP EP		EP EP		EP EP	
Advanced Case Study (ACS) - Option 1			EP EP		EP EP						EP EP		EP EP		EP EP		EP EP		EP EP		EP EP	
Corporate Reporting (CR) - Option 2					EP EP		EP EP						EP EP		EP EP		EP EP		EP EP		EP EP	
Strategic Business Management (SBM) - Option 2					EP EP		EP EP						EP EP		EP EP		EP EP		EP EP		EP EP	
Advanced Case Study (ACS) - Option 2			EP EP		EP EP						EP EP		EP EP		EP EP		EP EP		EP EP		EP EP	
Corporate Reporting (CR) - Option 3			EP EP		EP EP						EP EP		EP EP		EP EP		EP EP		EP EP		EP EP	
Strategic Business Management (SBM) - Option 3			EP EP		EP EP						EP EP		EP EP		EP EP		EP EP		EP EP		EP EP	
Advanced Case Study (ACS) - Option 3					EP EP		EP EP						EP EP		EP EP		EP EP		EP EP		EP EP	
Advanced Case Study (ACS) - Option 4					EP EP		EP EP						EP EP		EP EP		EP EP		EP EP		EP EP	

T Tuition	EP Exam Preparation
T - Personalised *	E Real Exam
T Live Online/Exam **	

* Personalised days are studied flexibly online and there will not be a live session on these dates. The timetable dates provided for personalised days are indicative only. You ultimately have the flexibility to complete your personalised study in the period between the preceding and next classroom course dates as shown on the timetable.

** This day consists of an online teaching session in the morning, followed by a course exam in the afternoon.

Live Online Evenings Professional Level - December 2025

Week commencing:	July							August														September							October																						
	28th				4th				11th				18th				25th				15th				22nd			29th				6th			13th																
	28	29	30	31	1	4	5	6	7	8	11	12	13	14	15	18	19	20	21	22	25	26	27	28	29	15	16	17	18	19	22	23	24	25	26	29	30	1	2	3	6	7	8	9	10	13	14	15	16	17	
Available Study Combinations	M	T	W	T	F	M	T	W	T	F	M	T	W	T	F	M	T	W	T	F	M	T	W	T	F	M	T	W	T	F	M	T	W	T	F	M	T	W	T	F	M	T	W	T	F	M	T	W	T	F	
Tax Compliance (TC)	T		T			T		T					T			T		T				T											T		T			T		T			T		T					PT	
Financial Management (FM)							T		T			T		T			T		T												T		T				T				T		T							PT	

Week commencing:	November																	December																																
	3rd					10th					17th					24th					1st					8th																								
	3	4	5	6	7	10	11	12	13	14	17	18	19	20	21	24	25	26	27	28	1	2	3	4	5	8	9	10	11	12																				
Available Study Combinations	M	T	W	T	F	M	T	W	T	F	M	T	W	T	F	M	T	W	T	F	M	T	W	T	F	M	T	W	T	F																				
Tax Compliance (TC)	EP					EP		EP				PT				EP							EP																											
Financial Management (FM)				EP			EP		EP				PT				EP							EP																										

T Tuition EP Exam Preparation
T T - Personalised * E Real Exam
PT Progress Test Submission Deadline **

* Personalised days are studied flexibly online and there will not be a live session on these dates. The timetable dates provided for personalised days are indicative but you must complete your personalised study in the period between the preceding and next classroom course dates as shown on the timetable.

There are three study methods available: Classroom, Live Online (dates shown above) or OnDemand

A complimentary Data & IT module available on MyKaplan will enhance your Professional & Advanced Level Studies.

Live Online Evenings Advanced Level - November 2025

Week commencing:	July					August										September										October																																		
	28th					4th					11th					18th					1st					8th					15th					22nd					29th																			
	28	29	30	31	1	4	5	6	7	8	11	12	13	14	15	18	19	20	21	22	1	2	3	4	5	8	9	10	11	12	15	16	17	18	19	22	23	24	25	26	29	30	1	2	3															
Available Study Combinations	M	T	W	T	F	M	T	W	T	F	M	T	W	T	F	M	T	W	T	F	M	T	W	T	F	M	T	W	T	F	M	T	W	T	F	M	T	W	T	F	M	T	W	T	F	M	T	W	T	F	M	T	W	T	F	M	T	W	T	F
Corporate Reporting (CR)		T		T			T		T			T		T			T		T								T		T			T		T								T		PT			T		PT											
Strategic Business Management (SBM)			T					T					T					T					T					T					PT					T																						
Case Study (CS) - Resit Course																																																												

Week commencing:	October															November														
	6th					13th					20th					27th					3rd									
	6	7	8	9	10	13	14	15	16	17	20	21	22	23	24	27	28	29	30	31	3	4	5	6	7					
Available Study Combinations	M	T	W	T	F	M	T	W	T	F	M	T	W	T	F	M	T	W	T	F	M	T	W	T	F	M	T	W	T	F
Corporate Reporting (CR)		EP		EP			EP		EP			EP		PT			EP		EP								E			
Strategic Business Management (SBM)						EP		EP			EP		PT			EP		EP									E			
Case Study (CS) - Resit Course																											E			

T	Tuition	EP	Exam Preparation
T	T - Personalised *	E	Real Exam
PT	Progress Test Submission Deadline **		

* Personalised days are studied flexibly online and there will not be a live session on these dates. The timetable dates provided for personalised days are indicative but you must complete your personalised study in the period between the preceding and next classroom course dates as shown on the timetable.

There are three study methods available: Classroom, Live Online (dates shown above) or OnDemand

A complimentary Data & IT module available on MyKaplan will enhance your Professional & Advanced Level Studies.