



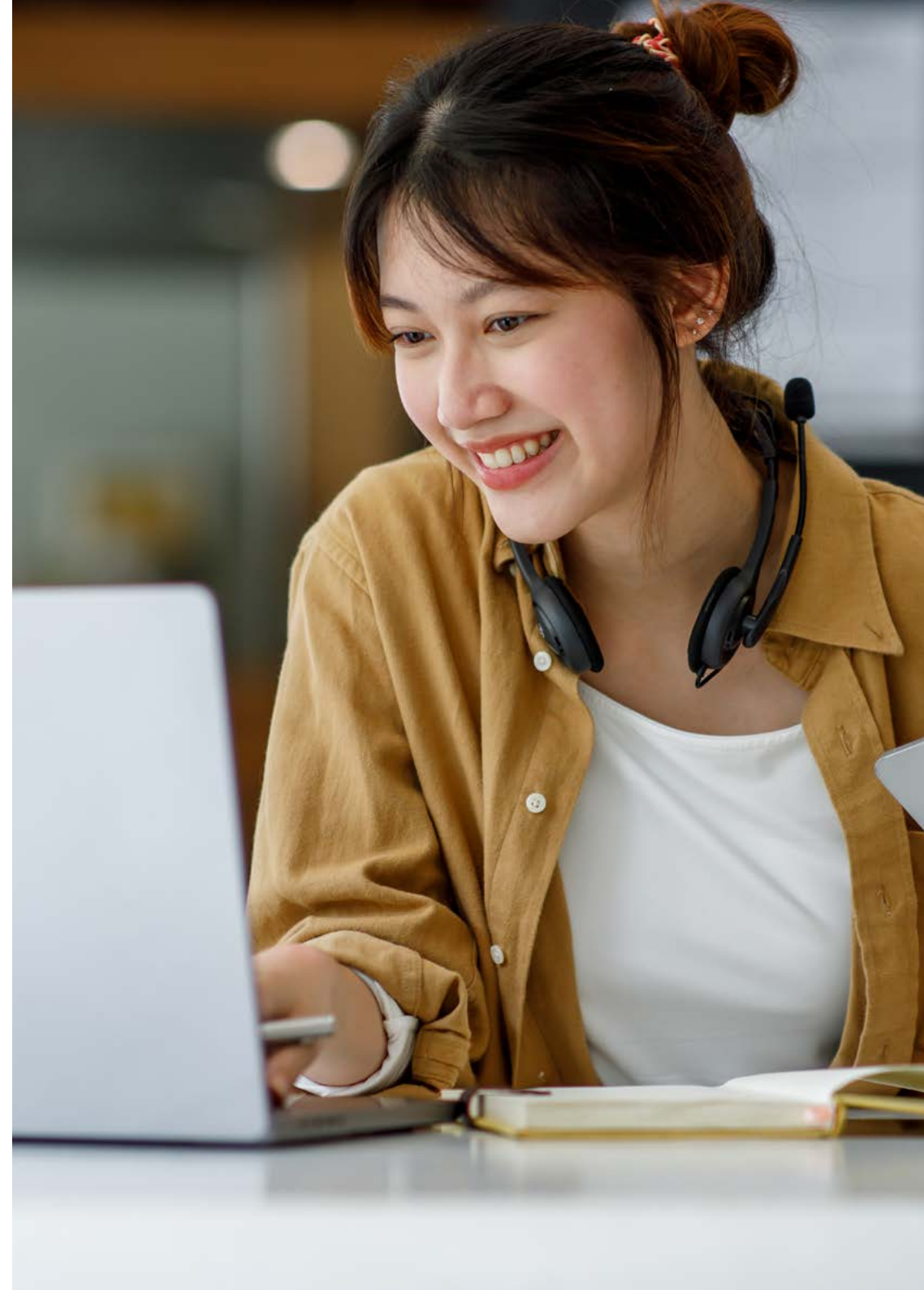
CFAB / ACA (ICAEW)

International Live Online
Timetable and Overview
Planner 2025



Version 6.0 Information last updated 22nd October 2024

Please note: Information and dates in this timetable are subject to change.



ACA Course Information (Current ACA Syllabus)

This timetable details the courses that our centre is offering for the ACA exams.

Certificate Level	
AC	Accounting
AS	Assurance
BTF	Business Technology & Finance
PTX	Principles of Taxation
MI	Management Information
LAW	Law

Learners starting ACA Certificate from September 2024 will study the new ACA syllabus. Please refer to the 'Next Generation ACA Certificate Level Timetable' for more details.

Professional & Advanced Level courses on current syllabus will continue to run throughout 2025.

Professional Level	
FAR	Financial Accounting and Reporting IFRS (2)
AA	Audit & Assurance
TC	Tax Compliance
FM	Financial Management
BST	Business Strategy & Technology
BPT	Business Planning: Taxation (3)
BPB	Business Planning: Banking (3)
BPI	Business Planning: Insurance (3)

Advanced Level	
CR	Corporate Reporting
SBM	Strategic Business Management
ACS	Advanced Case Study (4)

- (1) FAR can only be taken under IFRS. All Kaplan FAR learners will receive complimentary access to our UK GAAP conversion course. _____
- (2) Business Planning can be sat under either the Taxation, Banking or Insurance variant. Only a learner with a workplace specialisation of Banking or Insurance should undertake the BPB or BPI exams - more details on this can be found [here](#). (4) A learner may not attempt the Case Study until they have attempted all other exams. A learner can sit all three Advanced Level assessments at the [same](#) session and still comply with this rule. A learner may not attempt the Case Study until they have completed all but their last year of approved training by the end of the month in which the assessment is held.



Please contact us using the details below to make a course booking on the timetable dates
0161 259 7400 studentservices@kaplan.co.uk www.kaplan.co.uk/courses/aca-icaew

Kaplan Pathway Options (Current ACA Syllabus)

Pathway	Certificate Level	Professional Sitting 1	Professional Sitting 2	Professional Sitting 3	Advanced Sitting 1	Advanced Sitting 2
3:3 Professional & Intense Advanced	First 4–6 months of study	FAR/AA/TC	FM/BST/BP	–	CR/SBM/ACS	–
3:3 Professional & Decoupled Advanced	First 4–6 months of study	FAR/AA/TC	FM/BST/BP	–	CR/SBM	ACS
2:2:2 Professional & Intense Advanced	First 4–6 months of study	FAR/AA	TC/FM	BST/BP	CR/SBM/ACS	–
2:2:2 Professional & Decoupled Advanced	First 4–6 months of study	FAR/AA	TC/FM	BST/BP	CR/SBM	ACS

If your preferred pathway is not available at your chosen Kaplan training location we will be able to provide your preferred pathway via our [Live Online ACA course offering](#).

Our Advanced Case Study Resit Courses are designed to allow learners to understand where their exam technique went wrong and show them how to improve it. To find out more about our Advanced Case Study Resit Courses please click [here](#).

Learners studying Certificate Level must sit their exam in the same calendar year as their course of study. If the exam is sat in a different calendar year, updated study materials will be required.

Please ensure you study BPT **at the same time or after** TC as there is assumed knowledge from TC included within the BPT syllabus.



Please contact us using the details below to make a course booking on the timetable dates
 0161 259 7400 studentservices@kaplan.co.uk www.kaplan.co.uk/courses/aca-icaew

Kaplan's ACA Course Durations 2025 (Current ACA Syllabus)

Certificate Days			
Subject	Tutor-Led	OnDemand	Total
AC	7		7
AS	3		3
LAW		3	3
BTF		3	3
PTX	4		4
MI	4		4

Learners starting ACA Certificate from September 2024 will study the new ACA syllabus. Please refer to the 'Next Generation ACA Certificate Level Timetable' for more details.

Live Online Course Times	
Daytime	09.00 – 16.30 (UK Time)

First time learners must study and attend the Tuition and Exam Preparation phases of the course. Individual phases of the course cannot be booked in isolation.

Professional Days				
Subject	Tuition		Exam Prep	Total
	Tutor-Led	Personalised	Tutor-Led	
FAR	6	2	4	12
AA	3	1	3	7
TC	6	2	3	11
FM	5	1	3	9
BST	3	1	3	7
BPT	5	3	4	12
BPB	5	3	4	12
BPI	5	3	4	12

Advanced Days				
Subject	Tuition		Exam Prep	Total
	Tutor-Led	Personalised	Tutor-Led	
CR	5	2	4	11
SBM	3	1	3	7
ACS	5	0	5	10

Please note that for evening and Live Online courses, one session equates to half a day.



Please contact us using the details below to make a course booking on the timetable dates
0161 259 7400 studentservices@kaplan.co.uk www.kaplan.co.uk/courses/aca-icaew

Kaplan's ACA Next Generation Certificate Course Durations 2025

Subject	Tutor-Led	Focus Day**	OnDemand	Total
Accounting Fundamentals (AF)	7	1		8
Assurance and Risk Fundamentals (ARF)	3	1		4
Tax Fundamentals (TF)*	5	1		6
Business Law (BL)***			4	4
Business Insight and Performance (BIP)	5	1		6
Sustainability and Ethics (SE)***			4	4

* Please note: The Tax Fundamentals (TF) exam will not be available until 1st December 2025. Learners who wish to study Tax Fundamentals between September and December 2025 should instead complete the Principles of Tax (PTX) exam. PTX follows the current syllabus and can be taken as an alternative to TF.

** A Focus Day is a scheduled day within the course for consolidating knowledge and reinforcing learning, with content and pace tailored to individual learners.

*** It is recommended to study the four tutor-led Certificate papers from September to December. The remaining two papers, Business Law (BL) and Sustainability and Ethics (SE), should be studied OnDemand during January and February. Learners who prefer a more intensive study schedule may choose to study one or both of Business Law and Sustainability and Ethics alongside Taxation Fundamentals (TF) and Business Insight and Performance (BIP).

Live Online Course Times	
Daytime	09.00–16.30 (UK Time)



Please contact us using the details below to make a course booking on the timetable dates
 0161 259 7400 studentservices@kaplan.co.uk www.kaplan.co.uk/courses/aca-icaew

Live Online Certificate Level Current Syllabus 2025

Week commencing:	January					February								March					April					May																										
	6th					13th					3rd				10th				24th				10th					24th				7th					19th													
	6	7	8	9	10	13	14	15	16	17	3	4	5	6	7	10	11	12	13	14	24	25	26	27	28	10	11	12	13	14	24	25	26	27	28	7	8	9	10	11	19	20	21	22	23					
M	T	W	T	F	M	T	W	T	F	M	T	W	T	F	M	T	W	T	F	M	T	W	T	F	M	T	W	T	F	M	T	W	T	F	M	T	W	T	F	M	T	W	T	F	M	T	W	T	F	
Accounting (AC) - Option 1	T	T	T	T	T	T	T	T																																										
Assurance (AS) - Option 1																																																		
Accounting (AC) - Option 2											T	T	T	T	T	T	T	T	T	T																														
Assurance (AS) - Option 2																					T	T	T																											
Principles of Tax (PTX)																										T	T	T	T																					
Management Information (MI)																																				T	T	T	T											

Live Online Certificate Level Next Gen Syllabus 2025

Week commencing:	September														October										November																																			
	1st					8th					15th				22nd					29th					6th					20th					3rd					10th					17th															
	1	2	3	4	5	8	9	10	11	12	15	16	17	18	19	22	23	24	25	26	29	30	1	2	3	6	7	8	9	10	20	21	22	23	24	3	4	5	6	7	10	11	12	13	14	17	18	19	20	21										
M	T	W	T	F	M	T	W	T	F	M	T	W	T	F	M	T	W	T	F	M	T	W	T	F	M	T	W	T	F	M	T	W	T	F	M	T	W	T	F	M	T	W	T	F	M	T	W	T	F	M	T	W	T	F						
Accounting/Assurance & Risk Fundamentals (AF/ARF) - Option 1	T	T	T	T	T	T	T	T	T	T	T	T	T	T	T	T	T	T	T	T																																								
Accounting/Assurance & Risk Fundamentals (AF/ARF) - Option 2						T	T	T	T	T	T	T	T	T	T	T	T	T	T	T																																								
Accounting/Assurance & Risk Fundamentals (AF/ARF) - Option 3											T	T	T	T	T	T	T	T	T	T	T	T	T	T	T																																			
Principles of Tax (PTX) - Option 1																															T	T	T	T																										
Principles of Tax (PTX) - Option 2																																				T	T	T	T																					
Business Insight & Performance (BIP)																																														T	T	T	T	T										

T Tuition **EP** Exam Preparation

ACA Certificate exams are computer-based. We recommend sitting your exam 2 weeks after the course finishes. To book your exam please contact your local Kaplan centre.

Please note: The Tax Fundamentals (TF) exam will not be available until 1st December 2025. Learners who wish to study Tax Fundamentals between September and December 2025 should instead complete the Principles of Tax (PTX) exam. PTX follows the current syllabus and can be taken as an alternative to TF.

The above timetable indicates that learners will attend four Certificate papers from September to December. It is recommended that the remaining two papers, Business Law (BL) and Sustainability and Ethics (SE), be studied OnDemand during January and February. Learners who wish to study more intensively could choose to study one or both of BL and SE alongside Principles of Tax (PTX) and Business Insight and Performance (BIP).

Live Online Professional Level - September 2025

Week commencing:	June										July										Aug				
	16th					23rd					30th					21st					28th				
	16	17	18	19	20	23	24	25	26	27	30	1	2	3	4	21	22	23	24	25	28	29	30	31	1
Available Study Combinations	M	T	W	T	F	M	T	W	T	F	M	T	W	T	F	M	T	W	T	F	M	T	W	T	F
3:3 FAR/AA/TC - Option 1	T	T	T	T	T	T	T	T	T	T						T	T	T	T	T	T	T	T	T	T
3:3 FAR/AA/TC - Option 2	T	T	T	T	T	T	T	T	T	T						T	T	T	T	T	T	T	T	T	T
3:3 BPT/FM/BST - Option 1				T	T	T	T	T	T	T	T	T					T	T	T	T	T	T	T	T	T
3:3 BPT/FM/BST - Option 2				T	T	T	T	T	T	T	T	T					T	T	T	T	T	T	T	T	T
2:2:2 FAR/AA - Option 1	T	T	T	T						T	T									T	T	T	T	T	
2:2:2 FAR/AA - Option 2	T	T	T	T						T	T									T	T	T	T	T	
2:2:2 BPT/BST - Option 1				T	T	T	T	T			T						T	T	T	T	T	T	T		
2:2:2 BPT/BST - Option 2				T	T	T	T	T			T						T	T	T	T	T	T	T		
2:2:2 FM/TC - Option 1				T	T	T	T	T	T		T					T	T	T	T				T	T	T
2:2:2 FM/TC - Option 2				T	T	T	T	T	T		T					T	T	T	T				T	T	T

Week commencing:	August					September									
	25th					1st					8th				
	25	26	27	28	29	1	2	3	4	5	8	9	10	11	12
Available Study Combinations	M	T	W	T	F	M	T	W	T	F	M	T	W	T	F
3:3 FAR/AA/TC - Option 1	EP	EP	EP	EP	EP	EP	EP	EP	EP	EP	E	E			
3:3 FAR/AA/TC - Option 2	EP	EP	EP	EP	EP	EP	EP	EP	EP	EP	E	E			
3:3 BPT/FM/BST - Option 1	EP	EP	EP	EP	EP	EP	EP	EP	EP	EP		E	E		
3:3 BPT/FM/BST - Option 2	EP	EP	EP	EP	EP	EP	EP	EP	EP	EP		E	E		
2:2:2 FAR/AA - Option 1	EP	EP			EP	EP	EP	EP		EP	E				
2:2:2 FAR/AA - Option 2	EP	EP		EP	EP	EP		EP		EP	E				
2:2:2 BPT/BST - Option 1		EP	EP	EP		EP	EP	EP	EP			E	E		
2:2:2 BPT/BST - Option 2	EP	EP	EP	EP			EP	EP	EP			E	E		
2:2:2 FM/TC - Option 1	EP		EP	EP	EP				EP	EP		E	E		
2:2:2 FM/TC - Option 2			EP		EP	EP	EP		EP	EP		E	E		

T Tuition
T T - Personalised *

EP Exam Preparation
E Real Exam

* Personalised days are studied flexibly online and there will not be a live session on these dates. The timetable dates provided for personalised days are indicative but you must complete your personalised study in the period between the preceding and next classroom course dates as shown on the timetable.

A complimentary Data & IT module available on MyKaplan will enhance your Professional & Advanced Level Studies.

Live Online Advanced Level - July 2025

Week commencing:	March							April							May																					
	24th				31st			7th				21st			28th				12th			19th														
	24	25	26	27	28	31	1	2	3	4	7	8	9	10	11	21	22	23	24	25	28	29	30	1	2	12	13	14	15	16	19	20	21	22	23	
M	T	W	T	F	M	T	W	T	F	M	T	W	T	F	M	T	W	T	F	M	T	W	T	F	M	T	W	T	F	M	T	W	T	F		
Available Study Combinations																																				
CR/SBM/CS - Option 1																																				
CR/SBM/CS - Option 2																																				
CR/SBM/CS - Option 3																																				
CR/SBM/CS - Option 4																																				
CR/SBM - Option 1																																				
CR/SBM - Option 2																																				
CR/SBM - Option 3																																				
CR/SBM - Option 4																																				
CR/SBM - Option 5																																				
CS - Option 1																																				
CS - Option 2																																				
CS - Option 3																																				
CS - Option 4																																				
For information, please find the classroom and exam dates within the available study combinations of the individual subjects below:																																				
Corporate Reporting (CR) - Option 1																																				
Strategic Business Management (SBM) - Option 1																																				
Case Study (CS) - Option 1																																				
Corporate Reporting (CR) - Option 2																																				
Strategic Business Management (SBM) - Option 2																																				
Case Study (CS) - Option 2																																				
Corporate Reporting (CR) - Option 3																																				
Strategic Business Management (SBM) - Option 3																																				
Case Study (CS) - Option 3																																				
Corporate Reporting (CR) - Option 4																																				
Strategic Business Management (SBM) - Option 4																																				
Case Study (CS) - Option 4																																				
Corporate Reporting (CR) - Option 5																																				
Strategic Business Management (SBM) - Option 5																																				

Week commencing:	June	July																																		
		30th				7th				14th				21st																						
		30	1	2	3	4	7	8	9	10	11	14	15	16	17	18	21	22	23	24	25															
	M	T	W	T	F	M	T	W	T	F	M	T	W	T	F	M	T	W	T	F																
Available Study Combinations																																				
CR/SBM/CS - Option 1																																				
CR/SBM/CS - Option 2																																				
CR/SBM/CS - Option 3																																				
CR/SBM/CS - Option 4																																				
CR/SBM - Option 1																																				
CR/SBM - Option 2																																				
CR/SBM - Option 3																																				
CR/SBM - Option 4																																				
CR/SBM - Option 5																																				
CS - Option 1																																				
CS - Option 2																																				
CS - Option 3																																				
CS - Option 4																																				
For information, please find the classroom and exam dates within the available study combinations of the individual subjects below:																																				
Corporate Reporting (CR) - Option 1																																				
Strategic Business Management (SBM) - Option 1																																				
Case Study (CS) - Option 1																																				
Corporate Reporting (CR) - Option 2																																				
Strategic Business Management (SBM) - Option 2																																				
Case Study (CS) - Option 2																																				
Corporate Reporting (CR) - Option 3																																				
Strategic Business Management (SBM) - Option 3																																				
Case Study (CS) - Option 3																																				
Corporate Reporting (CR) - Option 4																																				
Strategic Business Management (SBM) - Option 4																																				
Case Study (CS) - Option 4																																				
Corporate Reporting (CR) - Option 5																																				
Strategic Business Management (SBM) - Option 5																																				

Tuition

T - Personalised *

Live Online/Exam **

EP Exam Preparation

E Real Exam

* Personalised days are studied flexibly online and there will not be a live session on these dates. The timetable dates provided for personalised days are indicative but you must complete your personalised study in the period between the preceding and next classroom course dates as shown on the timetable.

Live Online Evenings Professional Level - June 2025

Week commencing:	January							February														March														April																																											
	27th							3rd							10th							17th							24th							3rd							10th							17th							24th							31st				7th				14th				21st			
	27	28	29	30	31	3	4	5	6	7	10	11	12	13	14	17	18	19	20	21	24	25	26	27	28	3	4	5	6	7	10	11	12	13	14	17	18	19	20	21	24	25	26	27	28	31	1	2	3	4	7	8	9	10	11	14	15	16	17	18	21	22	23	24	25														
M	T	W	T	F	M	T	W	T	F	M	T	W	T	F	M	T	W	T	F	M	T	W	T	F	M	T	W	T	F	M	T	W	T	F	M	T	W	T	F	M	T	W	T	F	M	T	W	T	F	M	T	W	T	F	M	T	W	T	F	M	T	W	T	F	M	T	W	T	F	M	T	W	T	F					
Available Study Combinations																																																																															
Financial Accounting & Reporting (FAR)	T																																																																														
Audit & Assurance (AA)	T																																																																														
Business Planning Tax (BPT)	T																																																																														
Business Strategy & Technology (BST)	T																																																																														

Week commencing:	April				May																			June															
	28th				5th					12th					19th					26th				2nd					9th										
	28	29	30	1	2	5	6	7	8	9	12	13	14	15	16	19	20	21	22	23	26	27	28	29	30	2	3	4	5	6	9	10	11	12	13				
M	T	W	T	F	M	T	W	T	F	M	T	W	T	F	M	T	W	T	F	M	T	W	T	F	M	T	W	T	F	M	T	W	T	F	M	T	W	T	F
Available Study Combinations																																							
Financial Accounting & Reporting (FAR)	EP																																						
Audit & Assurance (AA)	EP																																						
Business Planning Tax (BPT)	EP																																						
Business Strategy & Technology (BST)	EP																																						

T Tuition EP Exam Preparation
T T - Personalised * E Real Exam
PT Progress Test Submission Deadline **

* Personalised days are studied flexibly online and there will not be a live session on these dates. The timetable dates provided for personalised days are indicative but you must complete your personalised study in the period between the preceding and next classroom course dates as shown on the timetable.

There are three study methods available: Classroom, Live Online (dates shown above) or OnDemand

A complimentary Data & IT module available on MyKaplan will enhance your Professional & Advanced Level Studies.

Live Online Evenings Advanced Level - November 2025

Week commencing:	July					August										September										October																																		
	28th					4th					11th					18th					1st					8th					15th					22nd					29th																			
	28	29	30	31	1	4	5	6	7	8	11	12	13	14	15	18	19	20	21	22	1	2	3	4	5	8	9	10	11	12	15	16	17	18	19	22	23	24	25	26	29	30	1	2	3															
Available Study Combinations	M	T	W	T	F	M	T	W	T	F	M	T	W	T	F	M	T	W	T	F	M	T	W	T	F	M	T	W	T	F	M	T	W	T	F	M	T	W	T	F	M	T	W	T	F	M	T	W	T	F	M	T	W	T	F	M	T	W	T	F
Corporate Reporting (CR)		T		T			T		T			T		T			T		T																																									
Strategic Business Management (SBM)			T					T					T					T						T																																				
Case Study (CS) - Resit Course																																																												

Week commencing:	October															November																																		
	6th					13th					20th					27th					3rd																													
	6	7	8	9	10	13	14	15	16	17	20	21	22	23	24	27	28	29	30	31	3	4	5	6	7																									
Available Study Combinations	M	T	W	T	F	M	T	W	T	F	M	T	W	T	F	M	T	W	T	F	M	T	W	T	F	M	T	W	T	F																				
Corporate Reporting (CR)		EP		EP			EP		EP			EP		PT			EP		EP																															
Strategic Business Management (SBM)							EP		EP			EP		PT			EP		EP																															
Case Study (CS) - Resit Course																																																		

T	Tuition	EP	Exam Preparation
T	T - Personalised *	E	Real Exam
PT	Progress Test Submission Deadline **		

* Personalised days are studied flexibly online and there will not be a live session on these dates. The timetable dates provided for personalised days are indicative but you must complete your personalised study in the period between the preceding and next classroom course dates as shown on the timetable.

There are three study methods available: Classroom, Live Online (dates shown above) or OnDemand

A complimentary Data & IT module available on MyKaplan will enhance your Professional & Advanced Level Studies.