



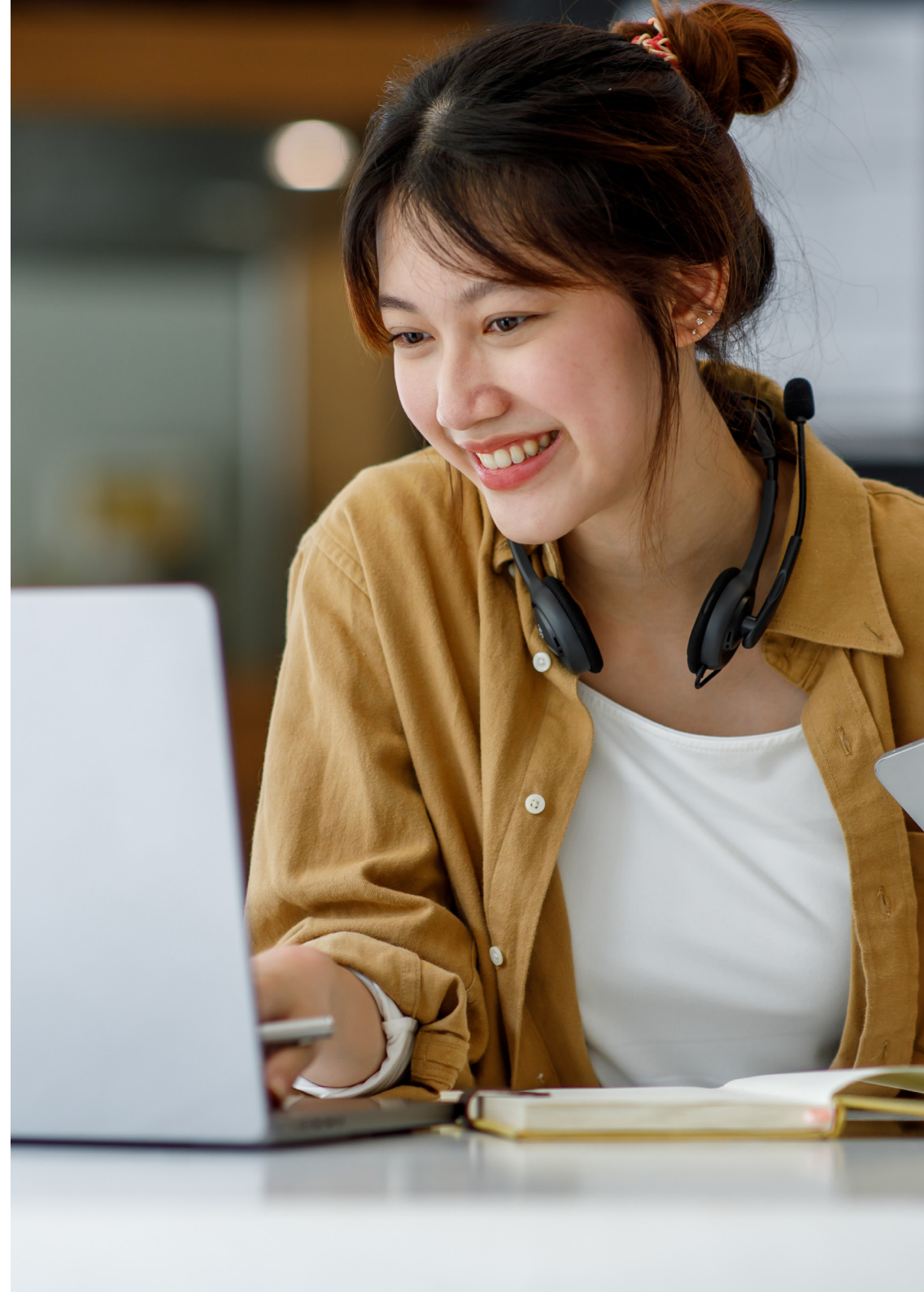
CFAB / ACA (ICAEW)

International Live Online
Timetable and Overview
Planner 2026
Weekday & Evening



Version 6.0 Information last updated 3 June 2026

Please note: Information and dates in this timetable are subject to change.



ACA Course Information

This timetable details the courses that our centre is offering for the ACA exams.

Next Generation ACA		Next Generation ACA		Current ACA Syllabus	
Certificate Level		Professional Level		Advanced Level	
AF	Accounting Fundamentals	FCS	Fundamental Case Study	CR	Corporate Reporting
ARF	Assurance Risk Fundamentals	ARR	Assurance, Risk & Reporting	SBM	Strategic Business Management
TF	Tax Fundamentals	TCP	Taxation Compliance & Planning	ACS	Advanced Case Study
BL	Business Law	CRDA	Corporate Reporting, Data & Assurance		
BIP	Business Insight & Performance	BDS	Business & Digital Strategy		
SE	Sustainability and Ethics	CFS	Corporate Financial Strategy		

Next Generation ACA Advanced Level exams will not be available until 2027.

Professional Level courses offered in 2026 on the outgoing syllabus will be exam preparation only. These courses are intended for learners who have deferred or are required to resit. Learners who have not yet attempted these exams are advised to transition to the Next Generation ACA syllabus.

For comprehensive details on transitional rules, timelines, and guidance please see the [ICAEW website](https://www.icaew.com).

Kaplan's Recommended ACA Next Generation Pathway

Certificate Level (Months 1-6)	Professional Level (Months 7-23)			Advanced Level (Months 24-28)
	Professional sitting 1	Professional sitting 2	Professional sitting 3	
All	Fundamental Case Study (FCS)	Tax Compliance & Planning (TCP)	Business & Digital Strategy (BDS)	Technical Case Study (TCS)
	Assurance, Risk & Reporting (ARR)	Corporate Reporting, Data & Assurance (CRDA)	Corporate Financial Strategy (CFS)	Strategic Case Study (SCS)

Next Generation ACA Advanced Level exams will not be available until 2027.

For detailed transitional rules, timelines and guidance please see the [ICAEW webpage](#).

Kaplan's ACA Next Generation Course Durations

Certificate Days				
Subject	Tutor-Led	Focus Day*	OnDemand	Total
Accounting Fundamentals (AF)	7	1	-	8
Assurance Risk Fundamentals (ARF)	3	1	-	4
Tax Fundamentals (TF)	5	1	-	6
Business Law (BL)**	-	-	4	4
Business Insight & Performance (BIP)	5	1	-	6
Sustainability & Ethics (SE)**	-	-	4	4

Professional Days					
Subject	Tuition		Exam Prep		Total
	Tutor-led	Focus Day*	Tutor-led	Focus Day*	
Fundamental Case Study (FCS)	2	-	2	1	5
Assurance, Risk & Reporting (ARR)	5	1	4	1	11
Taxation Compliance & Planning (TCP)	8	1	4	1	14
Corporate Reporting, Data & Assurance (CRDA)	5	1	4	1	11
Business & Digital Strategy (BDS)	3	1	3	1	8
Corporate Financial Strategy (CFS)	5	1	3	1	10

* A Focus Day is a scheduled day within the course for consolidating knowledge and reinforcing learning, with content and pace tailored to individual learners.

**Business Law (BL) and Sustainability and Ethics (SE), are available via OnDemand learning. Learners who prefer a more intensive study schedule may choose to study one or both Business Law and Sustainability and Ethics alongside Taxation Fundamentals (TF) and Business Insight and Performance (BIP).

ACA Professional Level Outgoing Syllabus

The Professional Level courses offered in 2026 on the outgoing syllabus will be exam preparation only. These courses are intended for learners who have deferred, or who are required to resit. Learners who have not yet attempted these exams are advised to transition to the Next Generation ACA syllabus.

For comprehensive details on transitional rules, timelines, and guidance, please refer to the [ICAEW website](#).

Classroom Course Times: Daytime 09.00–16.30 (UK Time)

Professional Level		Professional Days
Subject		Exam Prep
		Tutor-Led
FAR	Financial Accounting & Reporting IFRS (1)	4
AA	Audit & Assurance	3
TC	Tax Compliance	3
FM	Financial Management	3
BST	Business Strategy & Technology	3
BPT	Business Planning: Taxation (2)	4
BPB	Business Planning: Banking (2)	4
BPI	Business Planning: Insurance (2)	4

(1) FAR can only be taken under IFRS. All Kaplan FAR learners will receive complimentary access to our UK GAAP conversion course. (2) Business Planning can be sat under either the Taxation, Banking or Insurance variant. Only a learner with a workplace specialisation of Banking or Insurance should undertake the BPB or BPI exams - more details on this can be found [here](#).

ACA Advanced Level Course Information

Classroom Course Times: Weekday 09.00–16.30 (UK Time)

Pathway Options

Advanced Level	
CR	Corporate Reporting
SBM	Strategic Business Management
ACS	Advanced Case Study

Advanced Sitting 1	Advanced Sitting 2
CR/SBM/ACS	-
CR/SBM	ACS

Advanced Days				
Subject	Tuition		Exam Prep	Total
	Tutor-Led	Personalised	Tutor-Led	
CR	5	2	4	11
SBM	3	1	3	7
ACS	5	0	5	10

A learner may not attempt the Case Study until they have attempted all other exams. A learner can sit all three Advanced Level assessments at the same session and still comply with this rule. A learner may not attempt the Case Study until they have completed all but their last year of approved training by the end of the month in which the assessment is held.

Our Advanced Case Study Resit Courses are designed to allow learners to understand where their exam technique went wrong and show them how to improve it. To find out more about our Advanced Case Study Resit Courses please click [here](#).

Kaplan's ACA Evening Course Durations

Classroom Course Times: Evening 18.00–20.30 (UK Time)

Professional Level Next Generation ACA					
Subject	Tuition		Exam Prep		Total
	Tutor-Led*	Focus Session**	Tutor-Led*	Focus Session**	
Fundamental Case Study (FCS)	4	-	4	2	10
Assurance, Risk & Reporting (ARR)	10	2	8	2	22
Taxation Compliance & Planning (TCP)	16	2	8	2	28
Corporate Reporting, Data & Assurance (CRDA)	10	2	8	2	22
Business & Digital Strategy (BDS)	6	2	6	2	16
Corporate Financial Strategy (CFS)	10	2	6	2	20

For Certificate courses, see Classroom or Live Online Daytime timetable.

Please note that for evening and Live Online courses, one session equates to half a day.

Our Advanced Case Study Resit Courses are designed to allow learners to understand where their exam technique went wrong and show them how to improve it. To find out more about our Advanced Case Study Resit Courses please click [here](#).

Advanced				
Subject	Tuition		Exam Prep	Total
	Tutor-Led*	Personalised	Tutor-Led*	
Corporate Reporting (CR)	10	4	8	22
Strategic Business Management (SBM)	6	2	6	14
Advanced Case Study (ACS)	10	0	10	20

*The stated course duration includes time allocated for completion of a progress test during the tuition phase, and a mock exam(s) during the exam preparation phase.

**Focus Sessions are scheduled within the course to consolidate knowledge and reinforce learning. The content and pace are tailored to individual learners.

Live Online Certificate Level - Second Half 2026

Week commencing:	September															October									
	7th					14th					21st					28th				5th					
	7	8	9	10	11	14	15	16	17	18	21	22	23	24	25	28	29	30	1	2	5	6	7	8	9
	M	T	W	T	F	M	T	W	T	F	M	T	W	T	F	M	T	W	T	F	M	T	W	T	F
Accounting Fundamentals (AF) - Option 1			T	T	T	F	T	T	T			T													
Assurance Risk Fundamentals (ARF) - Option 1	T	T								F	T														
Accounting Fundamentals (AF) - Option 2						T	T	T			F	T	T	T			T								
Assurance Risk Fundamentals (ARF) - Option 2									T	T				F			T								
Accounting Fundamentals (AF) - Option 3											T	T	T			F	T	T	T		T				
Assurance Risk Fundamentals (ARF) - Option 3													T	T						F		T			

Week commencing:	November															December														
	2nd					9th					16th					7th				7th				14th						
	2	3	4	5	6	9	10	11	12	13	16	17	18	19	20	30	1	2	3	4	7	8	9	10	11	14	15	16	17	18
	M	T	W	T	F	M	T	W	T	F	M	T	W	T	F	M	T	W	T	F	M	T	W	T	F	M	T	W	T	F
Tax Fundamentals (TF) - Options 1 & 2	T	T	F	T	T	T																								
Tax Fundamentals (TF) - Option 3																					T	T	F	T	T					
Business Insight & Performance (BIP)																					T	T	T	F	T	T				

T Tuition
 F Focus Day *
 EP Exam Preparation

* A Focus Day is a scheduled day within the course for consolidating knowledge and reinforcing learning, with content and pace tailored to individual learners. There will not be a live session on these dates. It is essential that you work through the content of the Focus Day before the next classroom course date detailed on the timetable.

ACA Certificate exams are computer-based. **We recommend sitting your exam 2 weeks after the course finishes.** To book your exam please contact Kaplan Student Services or your employer (in cases where exams are booked centrally).

Live Online Professional Level - March 2026

Week commencing:	January																													
	5th					12th					19th					26th														
	5	6	7	8	9	12	13	14	15	16	19	20	21	22	23	26	27	28	29	30										
	M	T	W	T	F	M	T	W	T	F	M	T	W	T	F	M	T	W	T	F										
Recommended Study Combinations						T	T	T	T	T	F	T	T																	
FCS/ARR - Option 1						T	T	T	T	T	F	T	T																	
BDS/CFS - Option 1						T	T	T	T	F	T	T	T	F	T															
Individual Subject Dates																														
Fundamental Case Study (FCS) - Option 1 with ARR										T	T																			
Assurance, Risk & Reporting (ARR)						T	T	T			F	T	T																	
Business & Digital Strategy (BDS) - Option 1						T	T							F	T															
Corporate Financial Strategy (CFS) - Option 1									T	T	F	T	T	T																
Business & Digital Strategy (BDS) - Option 2						T	T							F	T															
Fundamental Case Study (FCS) - Transitional																				T	T									
Tax Compliance & Planning (TCP)	T	T	T	T	F	T					T	T	T																	

Week commencing:	February										March									
	16th					23th					2nd					9th				
	16	17	18	19	20	23	24	25	26	27	2	3	4	5	6	9	10	11	12	13
	M	T	W	T	F	M	T	W	T	F	M	T	W	T	F	M	T	W	T	F
Recommended Study Combinations											EP	EP	EP	EP	F	EP	E			
FCS/ARR - Option 1								EP	EP	EP	EP	EP	F	F	EP	E				
BDS/CFS - Option 1								EP	EP	EP	EP	F	EP	F	EP				E	
Individual Subject Dates																				
Fundamental Case Study (FCS) - Option 1 with ARR											EP	EP	F			E				
Assurance, Risk & Reporting (ARR)								EP	EP	EP				F	EP	E				
Business & Digital Strategy (BDS) - Option 1								EP			EP	F	EP						E	
Corporate Financial Strategy (CFS) - Option 1									EP	EP				F	EP				E	
Business & Digital Strategy (BDS) - Option 2								EP			EP	F	EP						E	
Fundamental Case Study (FCS) - Transitional			EP	EP	F											E				
Tax Compliance & Planning (TCP)											EP	EP	EP	F	EP		E			

Tuition
 Focus Day *
 Exam Preparation
 Real Exam

* A Focus Day is a scheduled day within the course for consolidating knowledge and reinforcing learning, with content and pace tailored to individual learners. There will not be a live session on these dates. It is essential that you work through the content of the Focus Day before the next classroom course date detailed on the timetable.

Learners who are currently transitioning from legacy to Next Generation ACA may require different subject combinations which can be selected as needed from the individual subject listing.

Live Online Professional Level - June 2026

Week commencing:	March					April															May																
	16th					23th					6th					13th					20th					27th											
	16	17	18	19	20	23	24	25	26	27	6	7	8	9	10	13	14	15	16	17	20	21	22	23	24	27	28	29	30	1							
Recommended Study Combinations	M	T	W	T	F	M	T	W	T	F	M	T	W	T	F	M	T	W	T	F	M	T	W	T	F	M	T	W	T	F	M	T	W	T	F		
FCS/ARR - Option 1	T	T	T	T	T	F	T	T																													
FCS/ARR - Option 2																T	T	T	T	T	F	T	T														
BDS/CFS											T	T	T	T		F	T	T	T		F	T									T	T					
TCP/CRDA	T	T	T						T	F	T					T	T	T	F	T	T	T											T	T			
Individual Subject Dates																																					
Fundamental Case Study (FCS) - Option 1 with ARR				T	T																																
Assurance, Risk & Reporting (ARR) - Option 1	T	T	T			F	T	T																													
Fundamental Case Study (FCS) - Option 2 with ARR																T	T																				
Assurance, Risk & Reporting (ARR)- Option 2																					T	T	T	F	T	T											
Business & Digital Strategy (BDS)														T	T									F	T												
Corporate Financial Strategy (CFS)											T	T				F	T	T	T																		
Tax Compliance & Planning (TCP)	T	T	T						T	F	T										T	T	T														
Corporate Reporting, Data & Assurance (CRDA)																T	T	T	F										T	T							
Fundamental Case Study (FCS) - Transitional																										T	T										

Week commencing:	May										June											
	18th					25th					1st						8th					
	18	19	20	21	22	25	26	27	28	29	1	2	3	4	5	8	9	10	11	12		
Recommended Study Combinations	M	T	W	T	F	M	T	W	T	F	M	T	W	T	F	M	T	W	T	F		
FCS/ARR - Option 1											EP	EP	EP	EP	EP	F	F	EP	E			
FCS/ARR - Option 2											EP	EP	F	EP	EP	EP	F	EP	E			
BDS/CFS											EP	EP	EP	EP	F	EP	F	EP		E		
TCP/CRDA						EP	EP	EP	EP	EP	F	EP	F	EP	EP		E					
Individual Subject Dates																						
Fundamental Case Study (FCS) - Option 1 with ARR											EP		EP		F				E			
Assurance, Risk & Reporting (ARR) - Option 1											EP		EP		F	EP			E			
Fundamental Case Study (FCS) - Option 2 with ARR											EP	EP	F						E			
Assurance, Risk & Reporting (ARR)- Option 2											EP	EP	EP	EP	F	EP			E			
Business & Digital Strategy (BDS)											EP		EP		F	EP			E			
Corporate Financial Strategy (CFS)											EP		EP	F	EP				E			
Tax Compliance & Planning (TCP)						EP	EP		EP	F			EP		EP				E			
Corporate Reporting, Data & Assurance (CRDA)						EP			EP				EP	F	EP				E			
Fundamental Case Study (FCS) - Transitional	EP	EP	F																E			

- T Tuition
- F Focus Day *
- EP Exam Preparation
- E Real Exam

* A Focus Day is a scheduled day within the course for consolidating knowledge and reinforcing learning, with content and pace tailored to individual learners. There will not be a live session on these dates. It is essential that you work through the content of the Focus Day before the next classroom course date detailed on the timetable.

Learners who are currently transitioning from legacy to Next Generation ACA may require different subject combinations which can be selected as needed from the individual subject listing.

Live Online Professional Level - September 2026

Week commencing:	June					July																			
	22th					29th					6th					20th					27th				
	22	23	24	25	26	29	30	1	2	3	6	7	8	9	10	20	21	22	23	24	27	28	29	30	31
M	T	W	T	F	M	T	W	T	F	M	T	W	T	F	M	T	W	T	F	M	T	W	T	F	
Recommended Study Combinations																									
FCS/ARR - Option 1	T	T	T	T	T	F	T	T																	
FCS/ARR - Option 2	T	T	T	T	T	F	T	T																	
BDS/CFS - Option 1	T	T	F	T	T	T	T	T	F	T															
BDS/CFS - Option 2	T	T	F	T	T	T	T	T	F	T															
TCP/CRDA - Option 1						T	T	T	T	T	T	F	T	T	F	T	T	T	T	T					
TCP/CRDA - Option 2						T	T	T	T	T	T	F	T	T	F	T	T	T	T	T					
Individual Subject Dates																									
Fundamental Case Study (FCS) - Option 1	T	T																							
Assurance, Risk & Reporting (ARR) - Option 1			T	T	T	F	T	T																	
Fundamental Case Study (FCS) - Option 2	T	T																							
Assurance, Risk & Reporting (ARR) - Option 2			T	T	T	F	T	T																	
Business & Digital Strategy (BDS) - Option 1			T	T					F	T															
Corporate Financial Strategy (CFS) - Option 1	T	T	F			T	T	T																	
Business & Digital Strategy (BDS) - Option 2			T	T					F	T															
Corporate Financial Strategy (CFS) - Option 2	T	T	F			T	T	T																	
Tax Compliance & Planning (TCP) - Option 1						T	T	T			T	F	T			T	T	T							
Corporate Reporting, Data & Assurance (CRDA) - Option 1									T	T				T	F										
Tax Compliance & Planning (TCP) - Option 2						T	T	T			T	F	T			T	T	T							
Corporate Reporting, Data & Assurance (CRDA) - Option 2									T	T				T	F						T	T			
Fundamental Case Study (FCS) - Transitional																								T	T

Week commencing:	August							September												
	17th				24th			31st				7th								
	17	18	19	20	21	24	25	26	27	28	31	1	2	3	4	7	8	9	10	11
M	T	W	T	F	M	T	W	T	F	M	T	W	T	F	M	T	W	T	F	
Recommended Study Combinations																				
FCS/ARR - Option 1											EP	EP	EP	F	EP	EP	EP	F	EP	E
FCS/ARR - Option 2											EP	EP	EP	F	EP	EP	EP	F	EP	E
BDS/CFS - Option 1											EP	EP	EP	F	EP	EP	EP	F	EP	E
BDS/CFS - Option 2											EP	EP	EP	F	EP	EP	EP	F	EP	E
TCP/CRDA - Option 1						EP	EP	EP	EP	EP	F	EP	F	EP	EP				E	
TCP/CRDA - Option 2						EP	EP	EP	EP	EP	F	EP	F	EP	EP				E	
Individual Subject Dates																				
Fundamental Case Study (FCS) - Option 1											EP	EP	F			EP	EP	F	EP	E
Assurance, Risk & Reporting (ARR) - Option 1											EP	EP	F			EP	EP	F	EP	E
Fundamental Case Study (FCS) - Option 2																				
Assurance, Risk & Reporting (ARR) - Option 2											EP	EP	F			EP	EP	F	EP	E
Business & Digital Strategy (BDS) - Option 1											EP	EP	F			EP	EP	F	EP	E
Corporate Financial Strategy (CFS) - Option 1											EP	EP	F			EP	EP	F	EP	E
Business & Digital Strategy (BDS) - Option 2											EP	EP	F			EP	EP	F	EP	E
Corporate Financial Strategy (CFS) - Option 2											EP	EP	F			EP	EP	F	EP	E
Tax Compliance & Planning (TCP) - Option 1						EP	EP	EP	EP	EP	F	EP	F	EP	EP				E	
Corporate Reporting, Data & Assurance (CRDA) - Option 1							EP	EP	EP	EP	F					EP	EP	F	EP	E
Tax Compliance & Planning (TCP) - Option 2						EP	EP	EP	EP	EP	F					EP	EP	F	EP	E
Corporate Reporting, Data & Assurance (CRDA) - Option 2							EP	EP	EP	EP	F					EP	EP	F	EP	E
Fundamental Case Study (FCS) - Transitional			EP	EP	F														E	

T Tuition
F Focus Day *
EP Exam Preparation
E Real Exam

* A Focus Day is a scheduled day within the course for consolidating knowledge and reinforcing learning, with content and pace tailored to individual learners. There will not be a live session on these dates. It is essential that you work through the content of the Focus Day before the next classroom course date detailed on the timetable.

Learners who are currently transitioning from legacy to Next Generation ACA may require different subject combinations which can be selected as needed from the individual subject listing.

Live Online Professional Level - December 2026

Week commencing:	September														October															
	14th				21st				28th						5th				12th				19th							
	14	15	16	17	18	21	22	23	24	25	28	29	30	1	2	5	6	7	8	9	12	13	14	15	16	19	20	21	22	23
	M	T	W	T	F	M	T	W	T	F	M	T	W	T	F	M	T	W	T	F	M	T	W	T	F	M	T	W	T	F
Recommended Study Combinations																														
FCS/ARR - Option 1						T	T	T	T	F	T	T																		
FCS/ARR - Option 2											T	T	T	T	F	T	T													
FCS/ARR - Option 3											T	T	T	T	F	T	T													
BDS/CFS - Option 1											T	T	F	T	T	T	T	F	T											
BDS/CFS - Option 2											T	T	T	F	F	T	T	T	T											
TCP/CRDA - Option 1						T	T	T	T	F	T	F	T											T	T	T	T			
TCP/CRDA - Option 2						T	T	T	T	F	T	F	T											T	T	T	T			
TCP/CRDA - Option 3						T	T	T	T	F	T	F	T											T	T	T	T			
Individual Subject Dates																														
Fundamental Case Study (FCS) - Option 1						T	T				F	T	T																	
Assurance, Risk & Reporting (ARR) - Option 1							T	T	T	F	T	T																		
Fundamental Case Study (FCS) - Option 2											T	T																		
Assurance, Risk & Reporting (ARR) - Option 2											T	T	T	F	T	T														
Fundamental Case Study (FCS) - Option 3											T	T	T	F	T	T														
Assurance, Risk & Reporting (ARR) - Option 3											T	T	T	F	T	T														
Business & Digital Strategy (BDS) - Option 1											T	T	F	T	T	T	F	T												
Corporate Financial Strategy (CFS) - Option 1											T	T	F	T	T	T														
Business & Digital Strategy (BDS) - Option 2											T	T	F	T	T															
Corporate Financial Strategy (CFS) - Option 2											T	T	F	T	T															
Tax Compliance & Planning (TCP) - Option 1						T	T	T	T	F	T	F	T											T	T	T	T			
Corporate Reporting, Data & Assurance (CRDA) - Option 1						T	T	T	T	F	T	F	T										T	T	T	T				
Tax Compliance & Planning (TCP) - Option 2						T	T	T	T	F	T	F	T										T	T	T	T				
Corporate Reporting, Data & Assurance (CRDA) - Option 2						T	T	T	T	F	T	F	T										T	T	T	T				
Tax Compliance & Planning (TCP) - Option 3						T	T	T	T	F	T	F	T										T	T	T	T				
Corporate Reporting, Data & Assurance (CRDA) - Option 3						T	T	T	T	F	T	F	T										T	T	T	T				
Fundamental Case Study (FCS) - Transitional																											T	T		

Week commencing:	November														December						
	16th				23rd				30th						7th						
	16	17	18	19	20	23	24	25	26	27	30	1	2	3	4	7	8	9	10	11	
	M	T	W	T	F	M	T	W	T	F	M	T	W	T	F	M	T	W	T	F	
Recommended Study Combinations																					
FCS/ARR - Option 1											EP	EP	EP	EP	F	EP	F	EP	E		
FCS/ARR - Option 2											EP	EP	EP	EP	F	EP	F	EP	E		
FCS/ARR - Option 3											EP	EP	EP	EP	F	EP	F	EP	E		
BDS/CFS - Option 1											EP	EP	EP	EP	F	EP	F	EP	E		
BDS/CFS - Option 2											EP	EP	EP	EP	F	EP	F	EP	E		
TCP/CRDA - Option 1											EP	EP	EP	EP	F	EP	F	EP	E		
TCP/CRDA - Option 2											EP	EP	EP	EP	F	EP	F	EP	E		
TCP/CRDA - Option 3											EP	EP	EP	EP	F	EP	F	EP	E		
Individual Subject Dates																					
Fundamental Case Study (FCS) - Option 1											EP	EP	EP	EP	F	EP	F	EP	E		
Assurance, Risk & Reporting (ARR) - Option 1											EP	EP	EP	EP	F	EP	F	EP	E		
Fundamental Case Study (FCS) - Option 2											EP	EP	EP	EP	F	EP	F	EP	E		
Assurance, Risk & Reporting (ARR) - Option 2											EP	EP	EP	EP	F	EP	F	EP	E		
Fundamental Case Study (FCS) - Option 3											EP	EP	EP	EP	F	EP	F	EP	E		
Assurance, Risk & Reporting (ARR) - Option 3											EP	EP	EP	EP	F	EP	F	EP	E		
Business & Digital Strategy (BDS) - Option 1											EP	EP	EP	EP	F	EP	F	EP	E		
Corporate Financial Strategy (CFS) - Option 1											EP	EP	EP	EP	F	EP	F	EP	E		
Business & Digital Strategy (BDS) - Option 2											EP	EP	EP	EP	F	EP	F	EP	E		
Corporate Financial Strategy (CFS) - Option 2											EP	EP	EP	EP	F	EP	F	EP	E		
Tax Compliance & Planning (TCP) - Option 1											EP	EP	EP	EP	F	EP	F	EP	E		
Corporate Reporting, Data & Assurance (CRDA) - Option 1											EP	EP	EP	EP	F	EP	F	EP	E		
Tax Compliance & Planning (TCP) - Option 2											EP	EP	EP	EP	F	EP	F	EP	E		
Corporate Reporting, Data & Assurance (CRDA) - Option 2											EP	EP	EP	EP	F	EP	F	EP	E		
Tax Compliance & Planning (TCP) - Option 3											EP	EP	EP	EP	F	EP	F	EP	E		
Corporate Reporting, Data & Assurance (CRDA) - Option 3											EP	EP	EP	EP	F	EP	F	EP	E		
Fundamental Case Study (FCS) - Transitional											EP	EP	EP	EP	F	EP	F	EP	E		

T Tuition
 F Focus Day *
 EP Exam Preparation
 E Real Exam

* A Focus Day is a scheduled day within the course for consolidating knowledge and reinforcing learning, with content and pace tailored to individual learners. There will not be a live session on these dates. It is essential that you work through the content of the Focus Day before the next classroom course date detailed on the timetable.

Learners who are currently transitioning from legacy to Next Generation ACA may require different subject combinations which can be selected as needed from the individual subject listing.

Live Online Advanced Level - July 2026

Week commencing:	March					April					May	June																																	
	23th	24th	25th	26th	27th	30th	31st	1st	2nd	3rd	13th	14th	15th	16th	17th	20th	21st	22nd	23rd	24th	27th	28th	29th	30th	1st	8th	9th	10th	11th	12th	15th	16th	17th	18th	19th										
Available Study Combinations	M	T	W	T	F	M	T	W	T	F	M	T	W	T	F	M	T	W	T	F	M	T	W	T	F	M	T	W	T	F	M	T	W	T	F	M	T	W	T	F	M	T	W	T	F
CR/SBM/ACS - Option 1	T	T	T	T	T	T	T	T	T	T						T	T	T	T	T	T	T	T	T	T						T	T	T	T	T	T	T	T	T	T					
CR/SBM/ACS - Option 2	T	T	T	T	T	T	T	T	T	T						T	T	T	T	T	T	T	T	T	T						T	T	T	T	T	T	T	T	T	T					
CR/SBM/ACS - Option 3											T	T	T	T	T	T	T	T	T	T	T	T	T	T	T						T	T	T	T	T	T	T	T	T	T					
CR/SBM/ACS - Option 4											T	T	T	T	T	T	T	T	T	T	T	T	T	T	T						T	T	T	T	T	T	T	T	T	T					
CR/SBM - Option 1	T	T				T	T	T	T	T						T	T	T	T	T	T	T	T	T	T						T	T	T	T	T	T	T	T	T	T					
CR/SBM - Option 2	T	T				T	T	T	T	T						T	T	T	T	T	T	T	T	T	T						T	T	T	T	T	T	T	T	T	T					
CR/SBM - Option 3											T	T	T	T	T	T	T	T	T	T	T	T	T	T	T						T	T	T	T	T	T	T	T	T	T					
CR/SBM - Option 4											T	T	T	T	T	T	T	T	T	T	T	T	T	T	T						T	T	T	T	T	T	T	T	T	T					
CR/SBM - Option 5											T	T	T	T	T	T	T	T	T	T	T	T	T	T	T						T	T	T	T	T	T	T	T	T	T					
ACS - Option 1			T	T	T																																								
ACS - Option 2			T	T	T																																								
ACS - Option 3											T	T	T	T	T																														
ACS - Option 4											T	T	T	T	T																														
For information, please find the classroom and exam dates within the available study combinations of the individual subjects below:																																													
Corporate Reporting (CR) - Option 1	T	T																																											
Strategic Business Management (SBM) - Option 1																																													
Advanced Case Study (ACS) - Option 1			T	T	T																																								
Corporate Reporting (CR) - Option 2	T	T																																											
Strategic Business Management (SBM) - Option 2																																													
Advanced Case Study (ACS) - Option 2			T	T	T																																								
Corporate Reporting (CR) - Option 3																																													
Strategic Business Management (SBM) - Option 3																																													
Advanced Case Study (ACS) - Option 3																																													
Corporate Reporting (CR) - Option 4																																													
Strategic Business Management (SBM) - Option 4																																													
Advanced Case Study (ACS) - Option 4																																													
Corporate Reporting (CR) - Option 5																																													
Strategic Business Management (SBM) - Option 5																																													

Week commencing:	June				July																				
	29th	30th	1st	2nd	3rd	6th	7th	8th	9th	10th	13th	14th	15th	16th	17th	20th	21st	22nd	23rd	24th					
Available Study Combinations	M	T	W	T	F	M	T	W	T	F	M	T	W	T	F	M	T	W	T	F	M	T	W	T	F
CR/SBM/ACS - Option 1						EP	EP	EP	EP	EP	EP	EP	EP	EP	EP	EP	EP	EP	EP	EP	EP	EP	EP	EP	EP
CR/SBM/ACS - Option 2						EP	EP	EP	EP	EP	EP	EP	EP	EP	EP	EP	EP	EP	EP	EP	EP	EP	EP	EP	EP
CR/SBM/ACS - Option 3						EP	EP	EP	EP	EP	EP	EP	EP	EP	EP	EP	EP	EP	EP	EP	EP	EP	EP	EP	EP
CR/SBM/ACS - Option 4						EP	EP	EP	EP	EP	EP	EP	EP	EP	EP	EP	EP	EP	EP	EP	EP	EP	EP	EP	EP
CR/SBM - Option 1						EP	EP	EP	EP	EP	EP	EP	EP	EP	EP	EP	EP	EP	EP	EP	EP	EP	EP	EP	EP
CR/SBM - Option 2						EP	EP	EP	EP	EP	EP	EP	EP	EP	EP	EP	EP	EP	EP	EP	EP	EP	EP	EP	EP
CR/SBM - Option 3						EP	EP	EP	EP	EP	EP	EP	EP	EP	EP	EP	EP	EP	EP	EP	EP	EP	EP	EP	EP
CR/SBM - Option 4						EP	EP	EP	EP	EP	EP	EP	EP	EP	EP	EP	EP	EP	EP	EP	EP	EP	EP	EP	EP
CR/SBM - Option 5						EP	EP	EP	EP	EP	EP	EP	EP	EP	EP	EP	EP	EP	EP	EP	EP	EP	EP	EP	EP
ACS - Option 1						EP	EP				EP	EP				EP	EP				EP	EP			
ACS - Option 2						EP	EP				EP	EP				EP	EP				EP	EP			
ACS - Option 3						EP	EP				EP	EP				EP	EP				EP	EP			
ACS - Option 4						EP	EP				EP	EP				EP	EP				EP	EP			
For information, please find the classroom and exam dates within the available study combinations of the individual subjects below:																									
Corporate Reporting (CR) - Option 1						EP	EP	EP			EP	EP								EP	EP				
Strategic Business Management (SBM) - Option 1						EP	EP				EP	EP			EP	EP				EP	EP				
Advanced Case Study (ACS) - Option 1						EP	EP				EP	EP			EP	EP				EP	EP				
Corporate Reporting (CR) - Option 2						EP	EP				EP	EP			EP	EP				EP	EP				
Strategic Business Management (SBM) - Option 2						EP	EP				EP	EP			EP	EP				EP	EP				
Advanced Case Study (ACS) - Option 2						EP	EP				EP	EP			EP	EP				EP	EP				
Corporate Reporting (CR) - Option 3						EP	EP				EP	EP			EP	EP				EP	EP				
Strategic Business Management (SBM) - Option 3						EP	EP				EP	EP			EP	EP				EP	EP				
Advanced Case Study (ACS) - Option 3						EP	EP				EP	EP			EP	EP				EP	EP				
Corporate Reporting (CR) - Option 4						EP	EP				EP	EP			EP	EP				EP	EP				
Strategic Business Management (SBM) - Option 4						EP	EP				EP	EP			EP	EP				EP	EP				
Advanced Case Study (ACS) - Option 4						EP	EP				EP	EP			EP	EP				EP	EP				
Corporate Reporting (CR) - Option 5						EP	EP				EP	EP			EP	EP				EP	EP				
Strategic Business Management (SBM) - Option 5						EP	EP				EP	EP			EP	EP				EP	EP				

T Tuition
 EP Exam Preparation
 T - Personalised *
 E Real Exam

* Personalised days are studied flexibly online and there will not be a live session on these dates. The timetable dates provided for personalised days are indicative only. You ultimately have the flexibility to complete your personalised study in the period between the preceding and next classroom course dates as shown on the timetable.

A complimentary Data & IT module is available on MyKaplan to recap Info and Excel functions used in CR & SBM.

Live Online Advanced Level - November 2026

Week commencing:	August														September										
	3rd							10th							7th				14th				21st		
	3	4	5	6	7	10	11	12	13	14	7	8	9	10	11	14	15	16	17	18	21	22	23	24	25
Available Study Combinations	M	T	W	T	F	M	T	W	T	F	M	T	W	T	F	M	T	W	T	F	M	T	W	T	F
CR/SBM/ACS - Option 1			T	T	T	T	T	T			T	T	T						T	T	T	T	T	T	
CR/SBM/ACS - Option 2			T	T	T	T	T	T			T	T	T						T	T	T	T	T	T	
CR/SBM/ACS - Option 3			T	T	T	T	T	T			T	T	T			T	T	T	T	T	T	T	T	T	
CR/SBM - Option 1			T	T	T	T	T	T											T	T	T	T	T	T	
CR/SBM - Option 2			T	T	T	T	T	T											T	T	T	T	T	T	
CR/SBM - Option 3			T	T	T	T	T	T								T	T	T	T	T					
ACS - Option 1											T	T	T										T	T	
ACS - Option 2											T	T	T										T	T	
ACS - Option 3											T	T	T										T	T	
ACS - Option 4											T	T	T										T	T	

For information, please find the classroom and exam dates within the available study combinations of the individual subjects below:

Subject	3	4	5	6	7	10	11	12	13	14	7	8	9	10	11	14	15	16	17	18	21	22	23	24	25
Corporate Reporting (CR) - Option 1			T	T	T	T	T												T	T	T				
Strategic Business Management (SBM) - Option 1			T					T														T	T		
Advanced Case Study (ACS) - Option 1											T	T	T											T	T
Corporate Reporting (CR) - Option 2			T	T		T	T												T	T	T				
Strategic Business Management (SBM) - Option 2					T			T														T	T		
Advanced Case Study (ACS) - Option 2											T	T	T											T	T
Corporate Reporting (CR) - Option 3			T	T		T	T									T	T	T							
Strategic Business Management (SBM) - Option 3					T			T											T	T					
Advanced Case Study (ACS) - Option 3											T	T	T											T	T
Advanced Case Study (ACS) - Option 4											T	T	T											T	T

Week commencing:	October														November						
	12th							19th							26th				2nd		
	12	13	14	15	16	19	20	21	22	23	26	27	28	29	30	2	3	4	5	6	
Available Study Combinations	M	T	W	T	F	M	T	W	T	F	M	T	W	T	F	M	T	W	T	F	
CR/SBM/ACS - Option 1				EP	EP	EP	EP	EP	EP	EP	EP	EP	EP	EP	EP	E	E	E			
CR/SBM/ACS - Option 2				EP	EP	EP	EP	EP	EP	EP	EP	EP	EP	EP	EP	E	E	E			
CR/SBM/ACS - Option 3				EP	EP	EP	EP	EP	EP	EP	EP	EP	EP	EP	EP	E	E	E			
CR/SBM - Option 1						EP	EP	EP	EP	EP	EP	EP	EP	EP	EP	E	E				
CR/SBM - Option 2						EP	EP	EP	EP	EP	EP	EP	EP	EP	EP	E	E				
CR/SBM - Option 3						EP	EP	EP	EP	EP	EP	EP	EP	EP	EP	E	E				
ACS - Option 1						EP	EP				EP	EP	EP						E		
ACS - Option 2						EP	EP				EP	EP	EP						E		
ACS - Option 3						EP	EP				EP	EP	EP						E		
ACS - Option 4						EP	EP				EP	EP	EP						E		

For information, please find the classroom and exam dates within the available study combinations of the individual subjects below:

Subject	12	13	14	15	16	19	20	21	22	23	26	27	28	29	30	2	3	4	5	6
Corporate Reporting (CR) - Option 1						EP	EP	EP	EP	EP						E				
Strategic Business Management (SBM) - Option 1						EP	EP	EP								E	E			
Advanced Case Study (ACS) - Option 1					EP	EP					EP	EP	EP						E	
Corporate Reporting (CR) - Option 2					EP	EP					EP	EP							E	
Strategic Business Management (SBM) - Option 2						EP	EP	EP	EP										E	
Advanced Case Study (ACS) - Option 2						EP	EP				EP	EP	EP						E	
Corporate Reporting (CR) - Option 3					EP	EP					EP								E	
Strategic Business Management (SBM) - Option 3						EP	EP	EP	EP										E	
Advanced Case Study (ACS) - Option 3						EP	EP				EP	EP	EP						E	
Advanced Case Study (ACS) - Option 4						EP	EP				EP	EP	EP						E	

T Tuition
T Personalised *
EP Exam Preparation
E Real Exam

* Personalised days are studied flexibly online and there will not be a live session on these dates. The timetable dates provided for personalised days are indicative only. You ultimately have the flexibility to complete your personalised study in the period between the preceding and next classroom course dates as shown on the timetable.

A complimentary Data & IT module is available on MyKaplan to recap Info and Excel functions used in CR & SBM.

Live Online Professional Level - December 2026 - Evenings

Week commencing:	July					August										September										October																													
	27th					3rd					10th					17th					24th					7th					21st					28th					5th														
	27	28	29	30	31	3	4	5	6	7	10	11	12	13	14	17	18	19	20	21	24	25	26	27	28	7	8	9	10	11	21	22	23	24	25	28	29	30	1	2	5	6	7	8	9										
Subjects available:	M	T	W	T	F	M	T	W	T	F	M	T	W	T	F	M	T	W	T	F	M	T	W	T	F	M	T	W	T	F	M	T	W	T	F	M	T	W	T	F	M	T	W	T	F	M	T	W	T	F	M	T	W	T	F
Tax Compliance & Planning (TCP)		T		T			T	T			T	T					T	T				F		F			T		T			T		T			T		T			T		T			T		T						
Corporate Reporting, Data & Assurance (CRDA)						T			T				T	T		T			T			F		F									T			T		T				T		T			T		T						

Week commencing:	October										November										December																								
	19th					26th					2nd					9th					16th					23th					30th														
	19	20	21	22	23	26	27	28	29	30	2	3	4	5	6	9	10	11	12	13	16	17	18	19	20	23	24	25	26	27	30	1	2	3	4										
Subjects available:	M	T	W	T	F	M	T	W	T	F	M	T	W	T	F	M	T	W	T	F	M	T	W	T	F	M	T	W	T	F	M	T	W	T	F	M	T	W	T	F	M	T	W	T	F
Tax Compliance & Planning (TCP)		EP		EP							EP	EP					EP	PT				F		F			EP					EP					EP								
Corporate Reporting, Data & Assurance (CRDA)			EP			EP			EP		EP			EP		PT						F		F		EP						EP													

T	Tuition	EP	Exam Preparation
F	Focus Day *	E	Real Exam
		PT	Progress Test Submission Deadline **

* A Focus Day is a scheduled day within the course for consolidating knowledge and reinforcing learning, with content and pace tailored to individual learners. There will not be a live session on these dates. It is essential that you work through the content of the Focus Day before the next classroom course date detailed on the timetable.

** The progress test dates above are submission deadlines, there will be no live session on these dates. You must submit your script by 2pm (UK time) on these specified days.

Live Online Advanced Level - July 2026 - Evenings

Week commencing:	February					March					April					May																								
	9th					23th					2nd					13th					20th					27th					4th									
	9	10	11	12	13	23	24	25	26	27	2	3	4	5	6	13	14	15	16	17	20	21	22	23	24	27	28	29	30	1	4	5	6	7	8					
Available Study Combinations	M	T	W	T	F	M	T	W	T	F	M	T	W	T	F	M	T	W	T	F	M	T	W	T	F	M	T	W	T	F	M	T	W	T	F	M	T	W	T	F
ACS	T		T			T		T			T		T			T					T					T														
ACS - Resit Course																																								
For information, please find the classroom and exam dates within the available study combinations of the individual subjects below:																																								
Advanced Case Study (ACS)	T		T			T		T			T		T			T					T					T														
Advanced Case Study (ACS) - Resit Course																																								

Week commencing:	May					June					July																																							
	11th					18th					1st					22nd					29th					6th					13th					20th														
	11	12	13	14	15	18	19	20	21	22	1	2	3	4	5	22	23	24	25	26	29	30	1	2	3	6	7	8	9	10	13	14	15	16	17	20	21	22	23	24										
Available Study Combinations	M	T	W	T	F	M	T	W	T	F	M	T	W	T	F	M	T	W	T	F	M	T	W	T	F	M	T	W	T	F	M	T	W	T	F	M	T	W	T	F	M	T	W	T	F	M	T	W	T	F
ACS											EP		EP			EP	EP				EP	EP						EP								EP														
ACS - Resit Course		EP					EP																																											
For information, please find the classroom and exam dates within the available study combinations of the individual subjects below:																																																		
Advanced Case Study (ACS)											EP		EP			EP	EP				EP	EP						EP								EP														
Advanced Case Study (ACS) - Resit Course		EP					EP																																											

T Tuition EP Exam Preparation
PT Progress Test Submission Deadline ** E Real Exam

* Personalised days are studied flexibly online and there will not be a live session on these dates. The timetable dates provided for personalised days are indicative only. You ultimately have the flexibility to complete your personalised study in the period between the preceding and next classroom course dates as shown on the timetable.

** The progress test dates above are submission deadlines, there will be no live session on these dates. You must submit your script by 2pm (UK time) on these specified days.

A complimentary Data & IT module is available on MyKaplan to recap Info and Excel functions used in CR & SBM.

Live Online Advanced Level - November 2026 - Evenings

Week commencing:	July					August										September																								
	27th					3rd					10th					17th					31st					7th					14th									
	27	28	29	30	31	3	4	5	6	7	10	11	12	13	14	17	18	19	20	21	31	1	2	3	4	7	8	9	10	11	14	15	16	17	18					
M	T	W	T	F	M	T	W	T	F	M	T	W	T	F	M	T	W	T	F	M	T	W	T	F	M	T	W	T	F	M	T	W	T	F						
Subjects available:																																								
Corporate Reporting (CR)		T		T			T		T			T		T			T		T			T		T			T		T			T								
Strategic Business Management (SBM)			T					T					T					T					T					T												
Advanced Case Study (ACS) - Resit course																																								

Week commencing:	September					October															November																			
	21st					28th				5th					12th					19th					26th					2nd										
	21	22	23	24	25	28	29	30	1	2	5	6	7	8	9	12	13	14	15	16	19	20	21	22	23	26	27	28	29	30	2	3	4	5	6					
M	T	W	T	F	M	T	W	T	F	M	T	W	T	F	M	T	W	T	F	M	T	W	T	F	M	T	W	T	F	M	T	W	T	F						
Subjects available:																																								
Corporate Reporting (CR)			PT										EP		EP			EP		EP			EP		PT			EP		EP			E							
Strategic Business Management (SBM)																		EP		EP			EP		PT			EP		EP			E							
Advanced Case Study (ACS) - Resit course			EP					EP																														E		

T Tuition	EP Exam Preparation
T T - Personalised *	E Real Exam
	PT Progress Test Submission Deadline **

* Personalised days are studied flexibly online and there will not be a live session on these dates. The timetable dates provided for personalised days are indicative only. You ultimately have the flexibility to complete your personalised study in the period between the preceding and next classroom course dates as shown on the timetable.

** The progress test dates above are submission deadlines, there will be no live session on these dates. You must submit your script by 2pm (UK time) on these specified days.

A complimentary Data & IT module is available on MyKaplan to recap Info and Excel functions used in CR & SBM.

Live Online Professional Level - March 2026 (Exam Prep only - old syllabus)

	February					March									
	23th					2nd					9th				
	23	24	25	26	27	2	3	4	5	6	9	10	11	12	13
Week commencing:	M	T	W	T	F	M	T	W	T	F	M	T	W	T	F
Available Study Combinations															
3:3 FAR/AA/TC - Option 1	EP	EP	EP	EP	EP	EP	EP	EP	EP	EP	E	E			
3:3 BPT/BST/FM - Option 1	EP	EP	EP	EP	EP	EP	EP	EP	EP	EP		E	E		
3:3 BPT/BST/FM - Option 2	EP	EP	EP	EP	EP	EP	EP	EP	EP	EP		E	E		
2:2:2 FAR/AA - Option 1				EP	EP	EP	EP	EP	EP	EP	E				
2:2:2 BPT/BST - Option 1	EP	EP	EP	EP				EP	EP	EP		E	E		
2:2:2 BPT/BST - Option 2	EP	EP	EP	EP			EP		EP	EP		E	E		
2:2:2 TC/FM - Option 1	EP	EP	EP		EP	EP	EP					E	E		
2:2:2 FM - Option 2					EP	EP		EP					E		
For information, please find the classroom and exam dates within the available study combinations of the individual subjects below:															
Financial Accounting & Reporting (FAR) - Option 1				EP	EP				EP	EP	E				
Audit & Assurance (AA) - Option 1						EP	EP	EP			E				
Tax Compliance (TC) - Option 1	EP	EP	EP									E			
Business Planning Tax (BPT) - Option 1	EP	EP	EP							EP		E			
Business Strategy & Technology (BST) - Option 1				EP				EP	EP				E		
Financial Management (FM) - Option 1					EP	EP	EP						E		
Business Planning Tax (BPT) - Option 2			EP	EP			EP			EP		E			
Business Strategy & Technology (BST) - Option 2	EP	EP							EP				E		
Financial Management (FM) - Option 2					EP	EP		EP					E		

EP Exam Preparation
E Real Exam

* Personalised days are studied flexibly online and there will not be a live session on these dates. The timetable dates provided for personalised days are indicative only. You ultimately have the flexibility to complete your personalised study in the period between the preceding and next classroom course dates as shown on the timetable.

Live Online Professional Level - June 2026 (Exam Prep only - old syllabus)

	May										June									
	18th					25th					1st					8th				
	18	19	20	21	22	25	26	27	28	29	1	2	3	4	5	8	9	10	11	12
Week commencing:	M	T	W	T	F	M	T	W	T	F	M	T	W	T	F	M	T	W	T	F
Available Study Combinations																				
3:3 FAR/AA/TC						EP	EP	EP	EP	EP	EP	EP	EP	EP	EP	E	E			
3:3 BPT/BST/FM						EP	EP	EP	EP	EP	EP	EP	EP	EP	EP	E		E		
2:2:2 FAR/AA									EP	EP	EP	EP	EP	EP	EP	E				
2:2:2 BPT/BST						EP	EP	EP			EP	EP		EP	EP	E		E		
2:2:2 TC/FM						EP	EP	EP	EP	EP			EP				E	E		
For information, please find the classroom and exam dates within the available study combinations of the individual subjects below:																				
Financial Accounting & Reporting (FAR) - Option 1									EP	EP	EP				EP	E				
Audit & Assurance (AA) - Option 1												EP	EP	EP		E				
Tax Compliance (TC) - Option 1						EP	EP	EP									E			
Business Planning Tax (BPT)								EP			EP	EP			EP	E				
Business Strategy & Technology (BST)						EP	EP							EP				E		
Financial Management (FM)									EP	EP			EP					E		

EP Exam Preparation
E Real Exam

* Personalised days are studied flexibly online and there will not be a live session on these dates. The timetable dates provided for personalised days are indicative only. You ultimately have the flexibility to complete your personalised study in the period between the preceding and next classroom course dates as shown on the timetable.

Live Online Professional Level - September 2026 (Exam Prep only - old syllabus)

Week commencing:	August					September									
	24th					31st					7th				
	24	25	26	27	28	31	1	2	3	4	7	8	9	10	11
Available Study Combinations	M	T	W	T	F	M	T	W	T	F	M	T	W	T	F
FAR/AA/TC	EP	EP	EP	EP	EP	EP	EP	EP	EP	EP	E	E			
BPT/BST/FM	EP	EP	EP	EP	EP	EP	EP	EP	EP	EP		E	E		
FAR/AA	EP	EP	EP	EP			EP	EP		EP	E				
BPT/BST	EP		EP		EP	EP		EP	EP	EP		E	E		
TC/FM		EP		EP	EP	EP	EP		EP			E	E		
For information, please find the classroom and exam dates within the available study combinations of the individual subjects below:															
Financial Accounting & Reporting (FAR)	EP	EP					EP	EP			E				
Audit & Assurance (AA)			EP	EP						EP	E				
Tax Compliance (TC)					EP	EP			EP			E			
Business Planning Tax (BPT)	EP		EP			EP		EP				E			
Business Strategy & Technology (BST)					EP				EP	EP				E	
Financial Management (FM)		EP		EP			EP							E	

EP Exam Preparation
E Real Exam

* Personalised days are studied flexibly online and there will not be a live session on these dates. The timetable dates provided for personalised days are indicative only. You ultimately have the flexibility to complete your personalised study in the period between the preceding and next classroom course dates as shown on the timetable.